

| DATE     | DESCRIPTION                         | REV. BY | CHK. |
|----------|-------------------------------------|---------|------|
| 12/31/14 | Tax Map Revisions                   | SB      |      |
| 12/31/13 | Tax Map Revisions                   | SB      |      |
| 12/31/12 | Tax Map Revisions                   | SB      |      |
| 09/02/10 | Subdivision-Bk. 403.03, lot 10 & 23 | JSE     |      |
|          | REVISED                             |         |      |

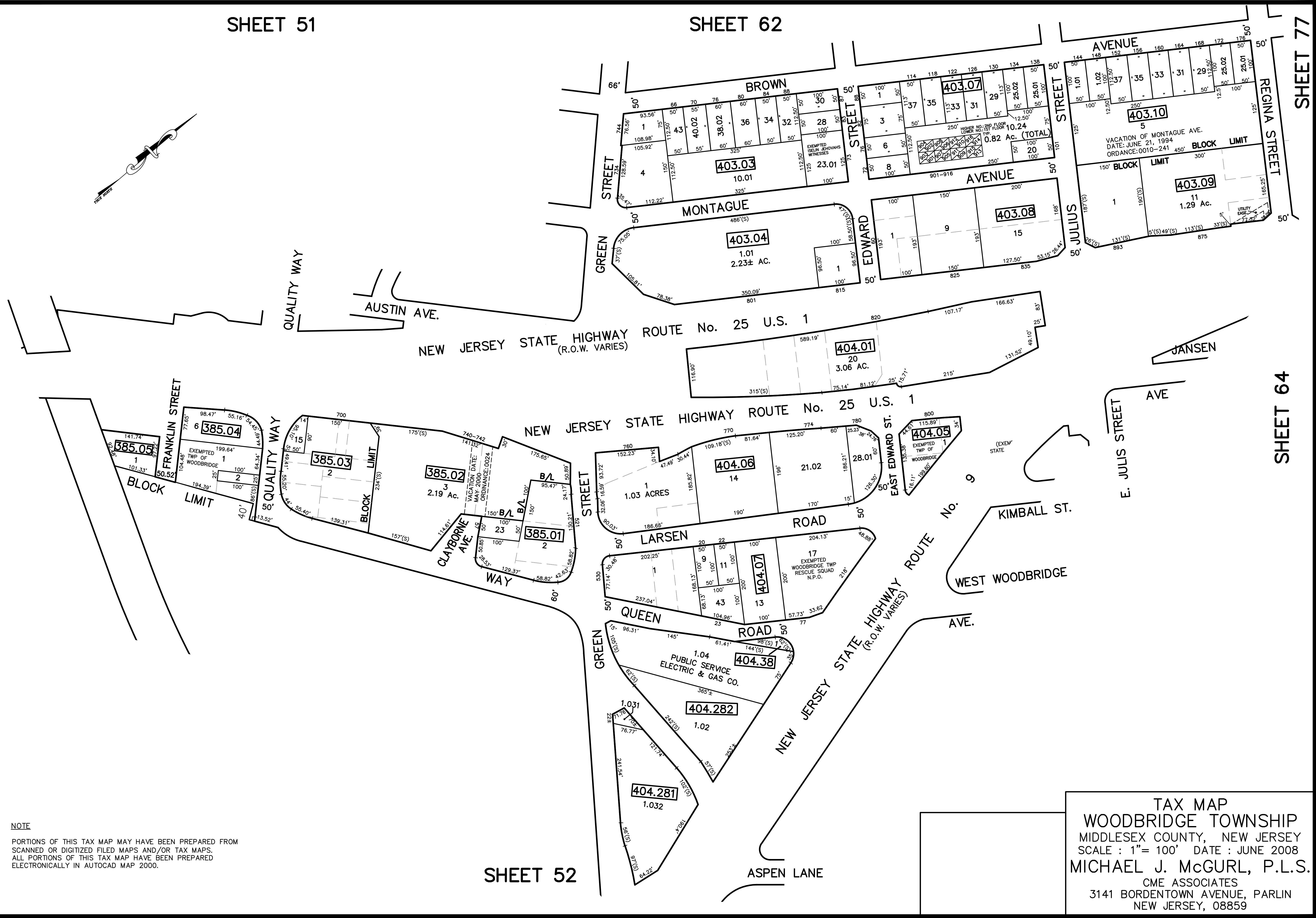
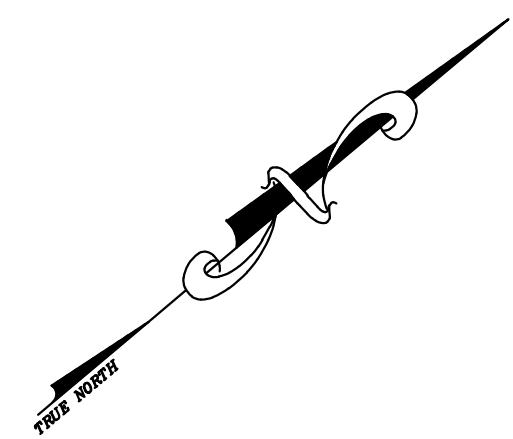
SHEET 51

SHEET 62

SHEET 77

SHEET 64

SHEET 52



NOTE  
 PORTIONS OF THIS TAX MAP MAY HAVE BEEN PREPARED FROM  
 SCANNED OR DIGITIZED FILED MAPS AND/OR TAX MAPS.  
 ALL PORTIONS OF THIS TAX MAP HAVE BEEN PREPARED  
 ELECTRONICALLY IN AUTOCAD MAP 2000.

TAX MAP  
 WOODBRIDGE TOWNSHIP  
 MIDDLESEX COUNTY, NEW JERSEY  
 SCALE : 1"= 100' DATE : JUNE 2008  
 MICHAEL J. McGURL, P.L.S.  
 CME ASSOCIATES  
 3141 BORDENTOWN AVENUE, PARLIN  
 NEW JERSEY, 08859