

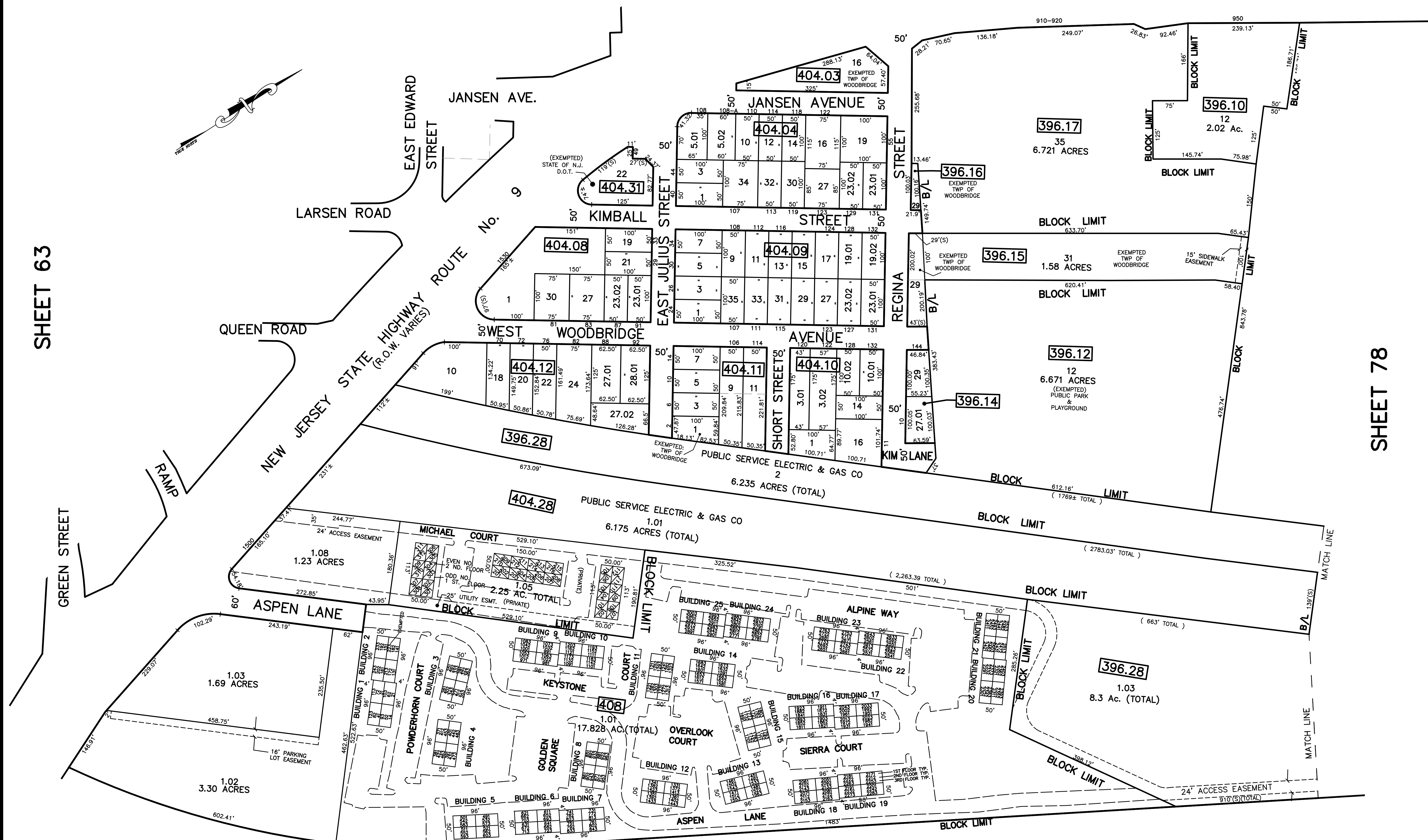
12/23/13	Tax Map Revisions	SB
12/23/12	Tax Map Revisions	SB
09/21/10	Subdivisions-Bk 404.08, lots 19 and 21	JSE
09/16/10	Corrections-Bk 404.10, lots 1 and 16	JSE
REVISED	DESCRIPTION	REV. BY
		CHK.

SHEET 77

NEW JERSEY STATE HIGHWAY ROUTE No. 25 U.S. 1

SHEET 63

SHEET 78



NOTE
 PORTIONS OF THIS TAX MAP MAY HAVE BEEN PREPARED FROM
 SCANNED OR DIGITIZED FILED MAPS AND/OR TAX MAPS.
 ALL PORTIONS OF THIS TAX MAP HAVE BEEN PREPARED
 ELECTRONICALLY IN AUTOCAD MAP 2000.

SHEET 65

SHEET 66

TAX MAP
 WOODBRIDGE TOWNSHIP
 MIDDLESEX COUNTY, NEW JERSEY
 SCALE : 1"= 100' DATE : JUNE 2008
 MICHAEL J. McGURL, P.L.S.
 CME ASSOCIATES
 3141 BORDENTOWN AVENUE, PARLIN
 NEW JERSEY, 08859