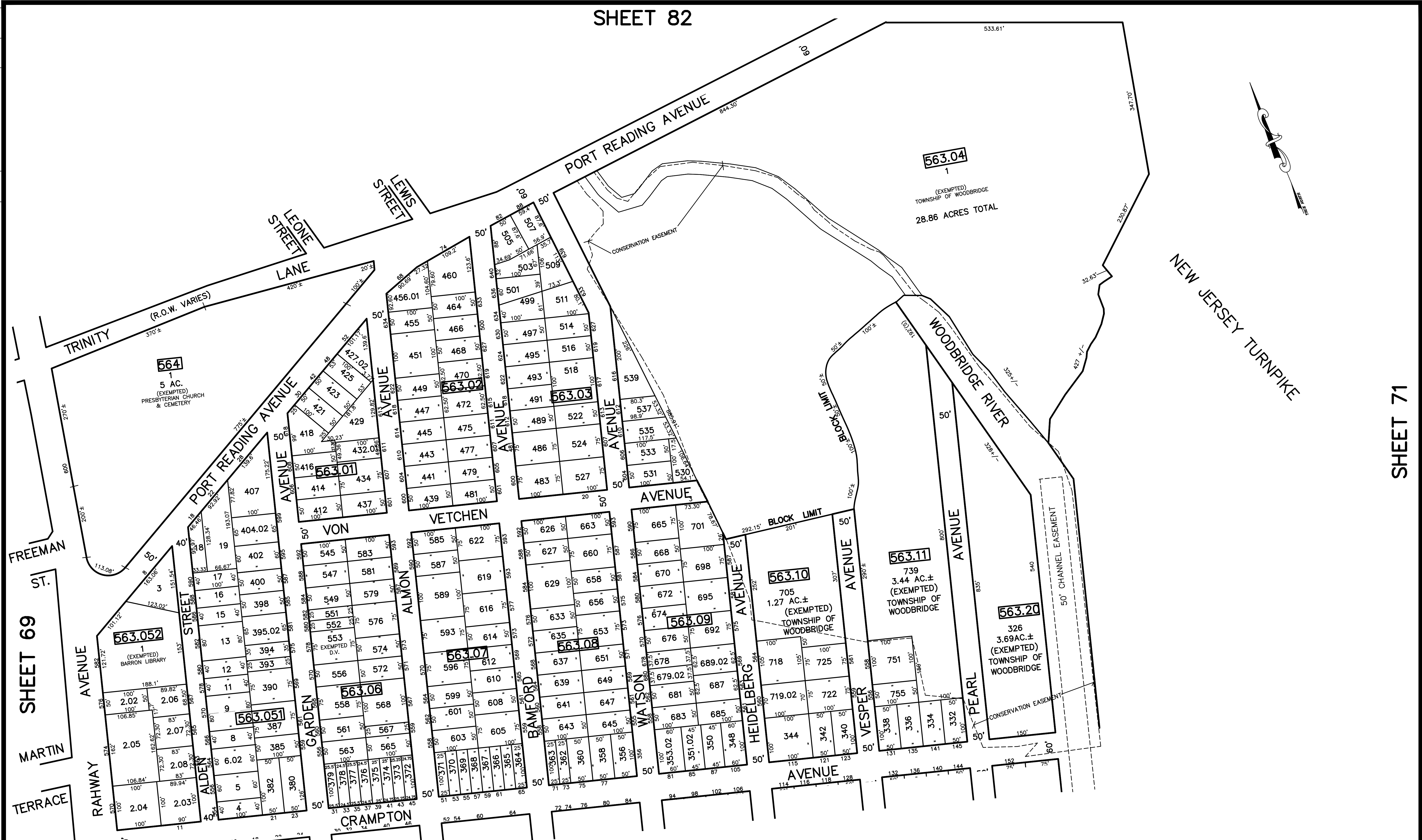


SHEET 82

12/31/12	Top Map Revisions	SB
12/23/10	Added Conservation Easements	JSE
09/29/10	Temp Prop. Acquisition-Bk 563.04, lot 1	JSE
09/29/10	NJ Title R.O.W. Takings, Bk 563.11, 563.20	JSE
09/29/10	Property Addition-Bk563.10, lot 725	JSE
REVISED	DESCRIPTION	REV. BY
		CHK.



NOTE
 PORTIONS OF THIS TAX MAP MAY HAVE BEEN PREPARED FROM
 SCANNED OR DIGITIZED FILED MAPS AND/OR TAX MAPS.
 ALL PORTIONS OF THIS TAX MAP HAVE BEEN PREPARED
 ELECTRONICALLY IN AUTOCAD MAP 2000.

TAX MAP
 WOODBRIDGE TOWNSHIP
 MIDDLESEX COUNTY, NEW JERSEY
 SCALE : 1"= 100' DATE : JUNE 2008
 MICHAEL J. McGURL, P.L.S.
 CME ASSOCIATES
 3141 BORDENTOWN AVENUE, PARLIN
 NEW JERSEY, 08859

SHEET 69

MARTIN TERRACE

RAHWAY AVENUE

FREEMAN ST.

ALDEN STREET

PORT READING AVENUE

VON VETCHEN

VON VETCHEN

VON VETCHEN

VON VETCHEN

VON VETCHEN

VON VETCHEN

VON VETCHEN

VON VETCHEN

VON VETCHEN

VON VETCHEN

VON VETCHEN

VON VETCHEN

VON VETCHEN

VON VETCHEN

VON VETCHEN

VON VETCHEN

VON VETCHEN

VON VETCHEN

VON VETCHEN

VON VETCHEN

VON VETCHEN

VON VETCHEN

VON VETCHEN

VON VETCHEN

VON VETCHEN

VON VETCHEN

VON VETCHEN

VON VETCHEN

VON VETCHEN

VON VETCHEN

VON VETCHEN

VON VETCHEN

VON VETCHEN

VON VETCHEN

VON VETCHEN

VON VETCHEN

VON VETCHEN

VON VETCHEN

VON VETCHEN

SHEET 57

SHEET 71

