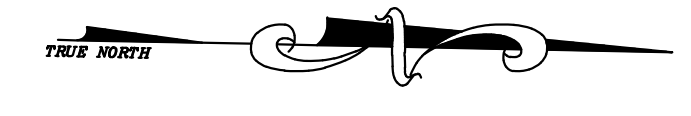


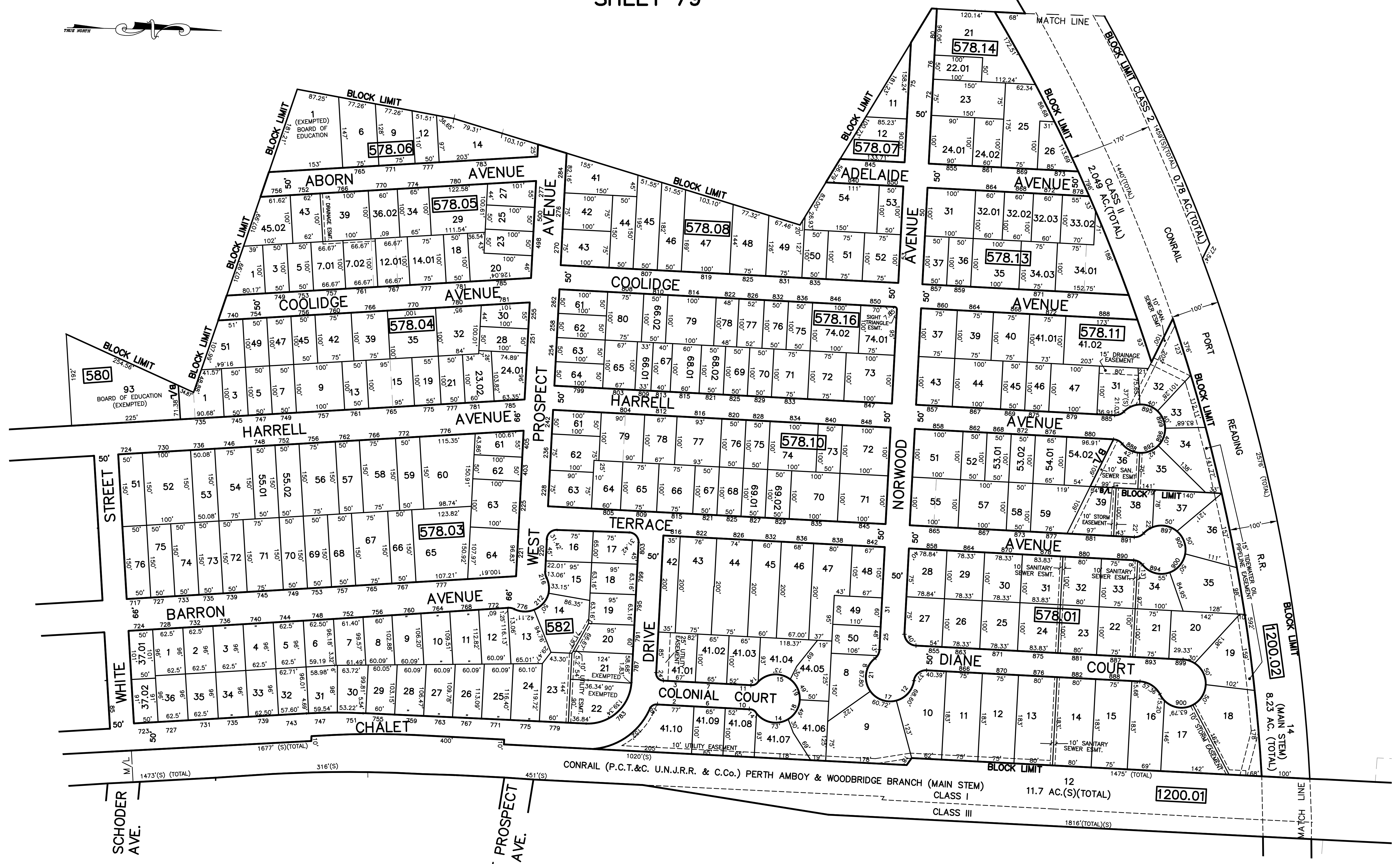
SHEET 79

12/31/21	Tax Map Revisions	SR
12/31/21	Tax Map Revisions	SR
10/14/10	Subdivision-Bk. 578/14, lot 21 and 22.01	JSE
	REUSED	DESCRIPTION
	REV. BY	CHK.



SHEET 68

SHEET 97



SHEET 81

NOTE
 PORTIONS OF THIS TAX MAP MAY HAVE BEEN PREPARED FROM
 SCANNED OR DIGITIZED FILED MAPS AND/OR TAX MAPS.
 ALL PORTIONS OF THIS TAX MAP HAVE BEEN PREPARED
 ELECTRONICALLY IN AUTOCAD MAP 2000.

TAX MAP
WOODBRIDGE TOWNSHIP
 MIDDLESEX COUNTY, NEW JERSEY
 SCALE : 1" = 100' DATE : JUNE 2008
MICHAEL J. McGURL, P.L.S.
 CME ASSOCIATES
 3141 BORDENTOWN AVENUE, PARLIN
 NEW JERSEY, 08859