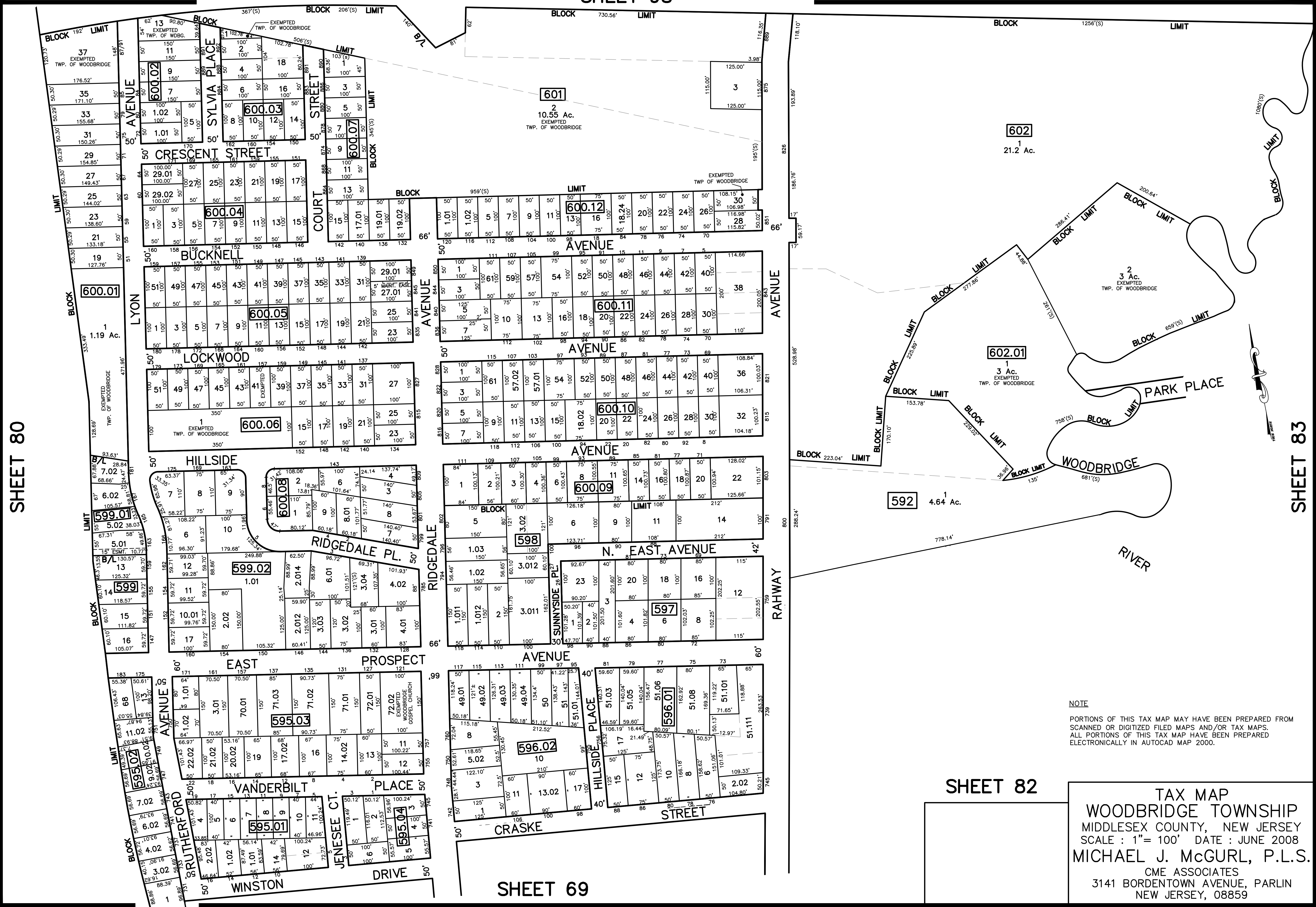


SHEET 98

12/31/24	Top Map Revisions	SB
12/31/14	Top Map Revisions	SB
12/31/13	Top Map Revisions	SB
12/31/12	Top Map Revisions	SB
12/31/10	Added Conservation Easement	USE
09/03/10	Subdivision-BK 600.05, lot 27 and 29	USE
REVISED	DESCRIPTION	REV. BY
		CHK.



NOTE
 PORTIONS OF THIS TAX MAP MAY HAVE BEEN PREPARED FROM
 SCANNED OR DIGITIZED FILED MAPS AND/OR TAX MAPS.
 ALL PORTIONS OF THIS TAX MAP HAVE BEEN PREPARED
 ELECTRONICALLY IN AUTOCAD MAP 2000.

TAX MAP
 WOODBRIDGE TOWNSHIP
 MIDDLESEX COUNTY, NEW JERSEY
 SCALE : 1"= 100' DATE : JUNE 2008
 MICHAEL J. McGURL, P.L.S.
 CME ASSOCIATES
 3141 BORDENTOWN AVENUE, PARLIN
 NEW JERSEY, 08859

SHEET 80

SHEET 83

SHEET 69

SHEET 82