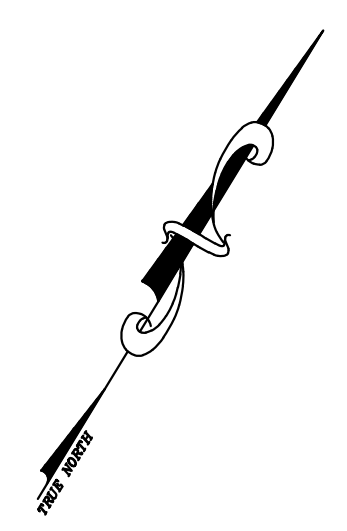


REVISED	DESCRIPTION	REV. BY	CHK.
12/31/12	Tax Map Revisions	SB	
06/17/11	Subdivision-BK 630, Lots 193 & 197	SB	
06/16/11	Subdivision-BK 631, Lots 176	SB	
09/03/10	Subdivision-BK 631, Lots 174	JSE	

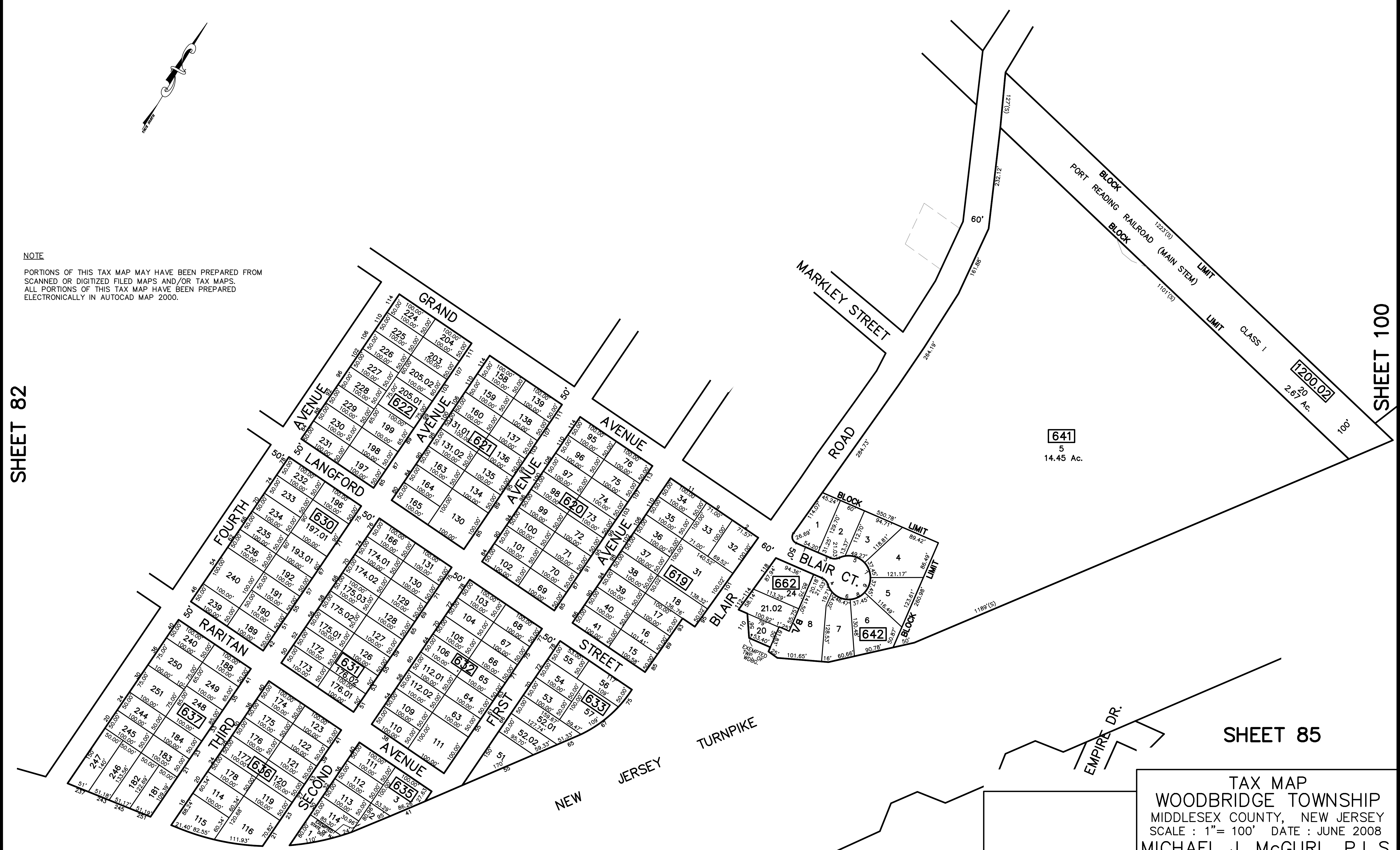


NOTE

PORTIONS OF THIS TAX MAP MAY HAVE BEEN PREPARED FROM  
 SCANNED OR DIGITIZED FILED MAPS AND/OR TAX MAPS.  
 ALL PORTIONS OF THIS TAX MAP HAVE BEEN PREPARED  
 ELECTRONICALLY IN AUTOCAD MAP 2000.

SHEET 82

SHEET 100



TAX MAP  
 WOODBRIDGE TOWNSHIP  
 MIDDLESEX COUNTY, NEW JERSEY  
 SCALE : 1"= 100' DATE : JUNE 2008  
 MICHAEL J. McGURL, P.L.S.  
 CME ASSOCIATES  
 3141 BORDENTOWN AVENUE, PARLIN  
 NEW JERSEY, 08859

SHEET 71

SHEET 85