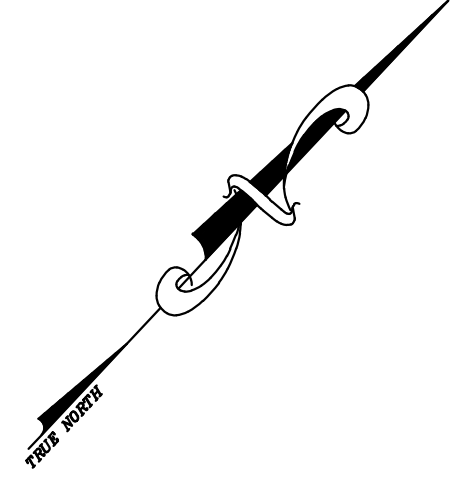


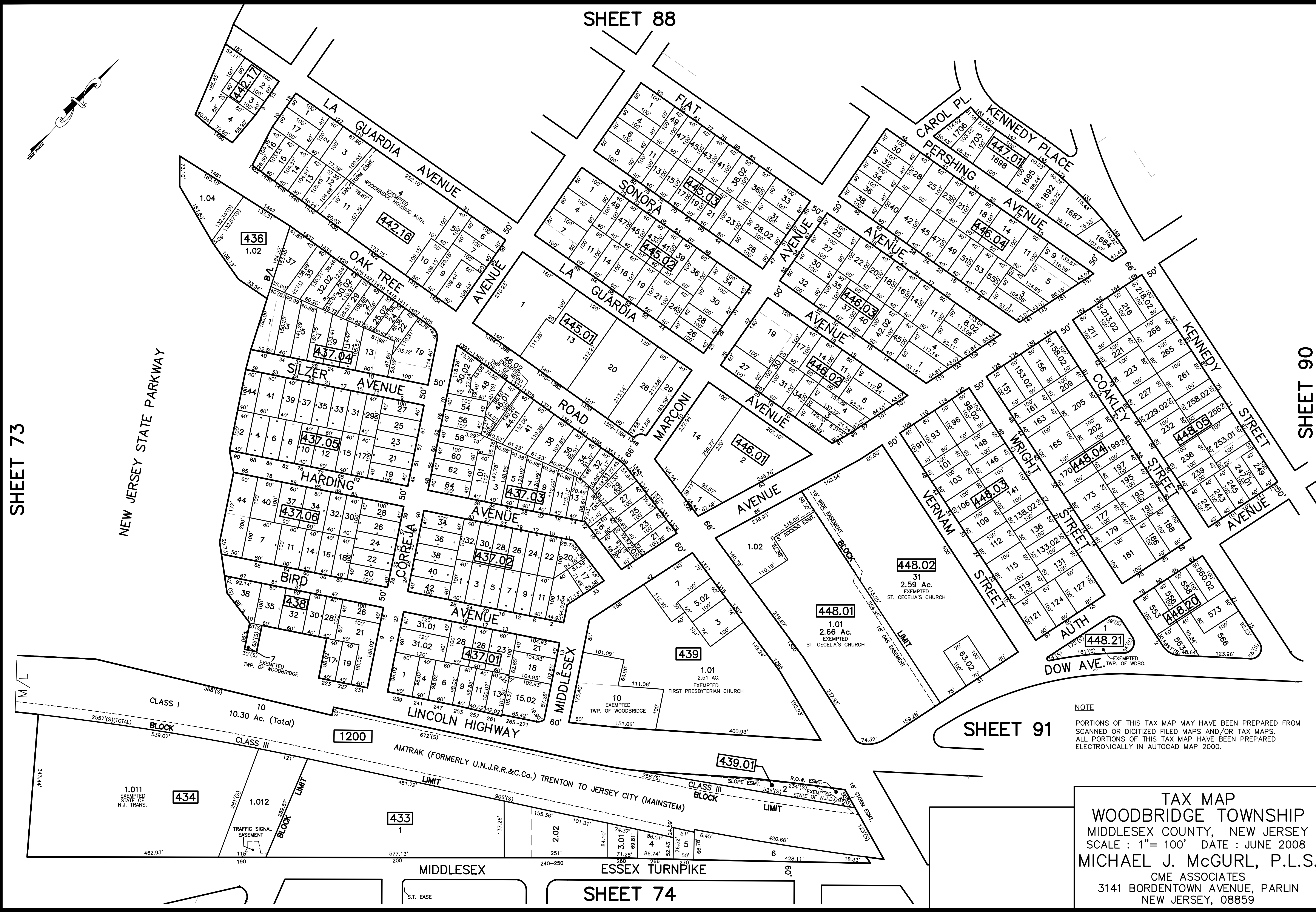
SHEET 88

12/31/23	Tax Map Revisions	SB	CHK.
12/31/22	Tax Map Revisions	SB	
12/31/16	Tax Map Revisions	SB	
12/31/14	Tax Map Revisions	SB	
12/31/12	Tax Map Revisions	SB	
REVISED	DESCRIPTION		
		REV. BY	CHK.



SHEET 73

SHEET 90



NOTE  
 PORTIONS OF THIS TAX MAP MAY HAVE BEEN PREPARED FROM  
 SCANNED OR DIGITIZED FILED MAPS AND/OR TAX MAPS.  
 ALL PORTIONS OF THIS TAX MAP HAVE BEEN PREPARED  
 ELECTRONICALLY IN AUTOCAD MAP 2000.

SHEET 91

**TAX MAP**  
**WOODBIDGE TOWNSHIP**  
 MIDDLESEX COUNTY, NEW JERSEY  
 SCALE : 1"= 100' DATE : JUNE 2008  
**MICHAEL J. McGURL, P.L.S.**  
 CME ASSOCIATES  
 3141 BORDENTOWN AVENUE, PARLIN  
 NEW JERSEY, 08859

SHEET 74