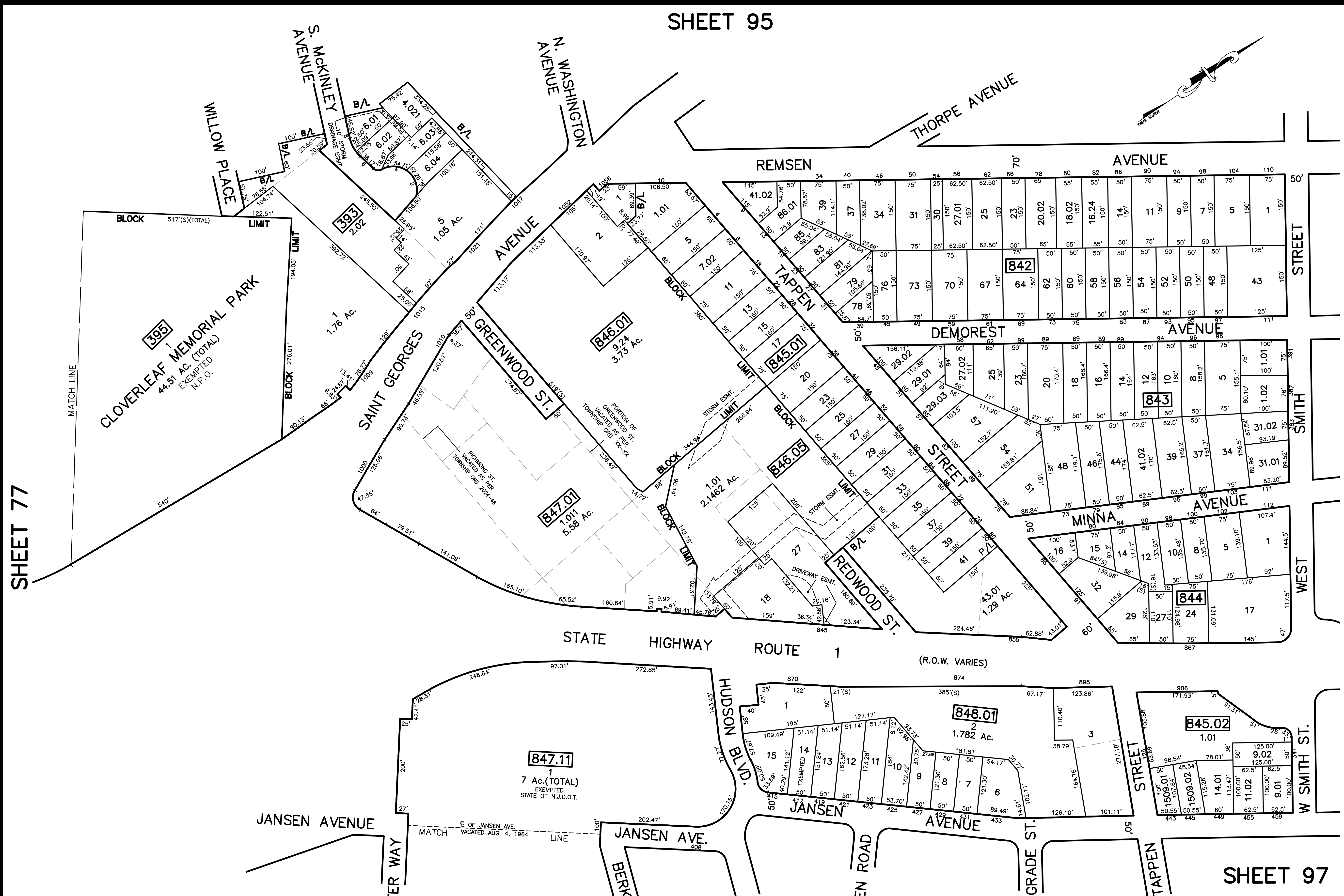
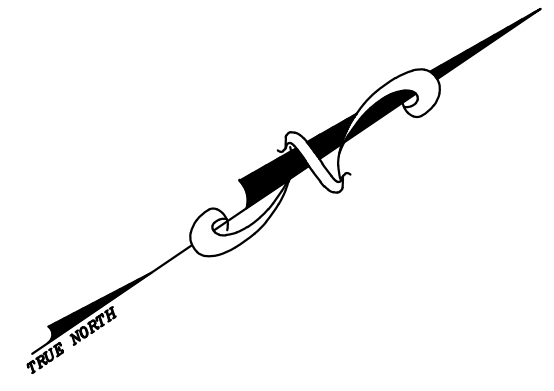


SHEET 95

12/21/24	Tox Map Revisions	SB
12/21/23	Tox Map Revisions	SB
12/21/16	Tox Map Revisions	SB
12/21/15	Tox Map Revisions	SB
12/21/13	Tox Map Revisions	SB
12/21/12	Tox Map Revisions	SB
10/24/10	ADDITION TO BK. 847.01, Ld. 1	JSE
REVISED	DESCRIPTION	
REV. BY	CHK.	



SHEET 77

SHEET 110

NOTE

PORTIONS OF THIS TAX MAP MAY HAVE BEEN PREPARED FROM
 SCANNED OR DIGITIZED FILED MAPS AND/OR TAX MAPS.
 ALL PORTIONS OF THIS TAX MAP HAVE BEEN PREPARED
 ELECTRONICALLY IN AUTOCAD MAP 2000.

SHEET 78

SHEET 97

TAX MAP
 WOODBRIDGE TOWNSHIP
 MIDDLESEX COUNTY, NEW JERSEY
 SCALE : 1"= 100' DATE : JUNE 2008
 MICHAEL J. McGURL, P.L.S.
 CME ASSOCIATES
 3141 BORDENTOWN AVENUE, PARLIN
 NEW JERSEY, 08859