

12/31/15	Tax Map Revisions	SR	REV. BY	CHK.
12/31/13	Tax Map Revisions	SR		
	DESCRIPTION			

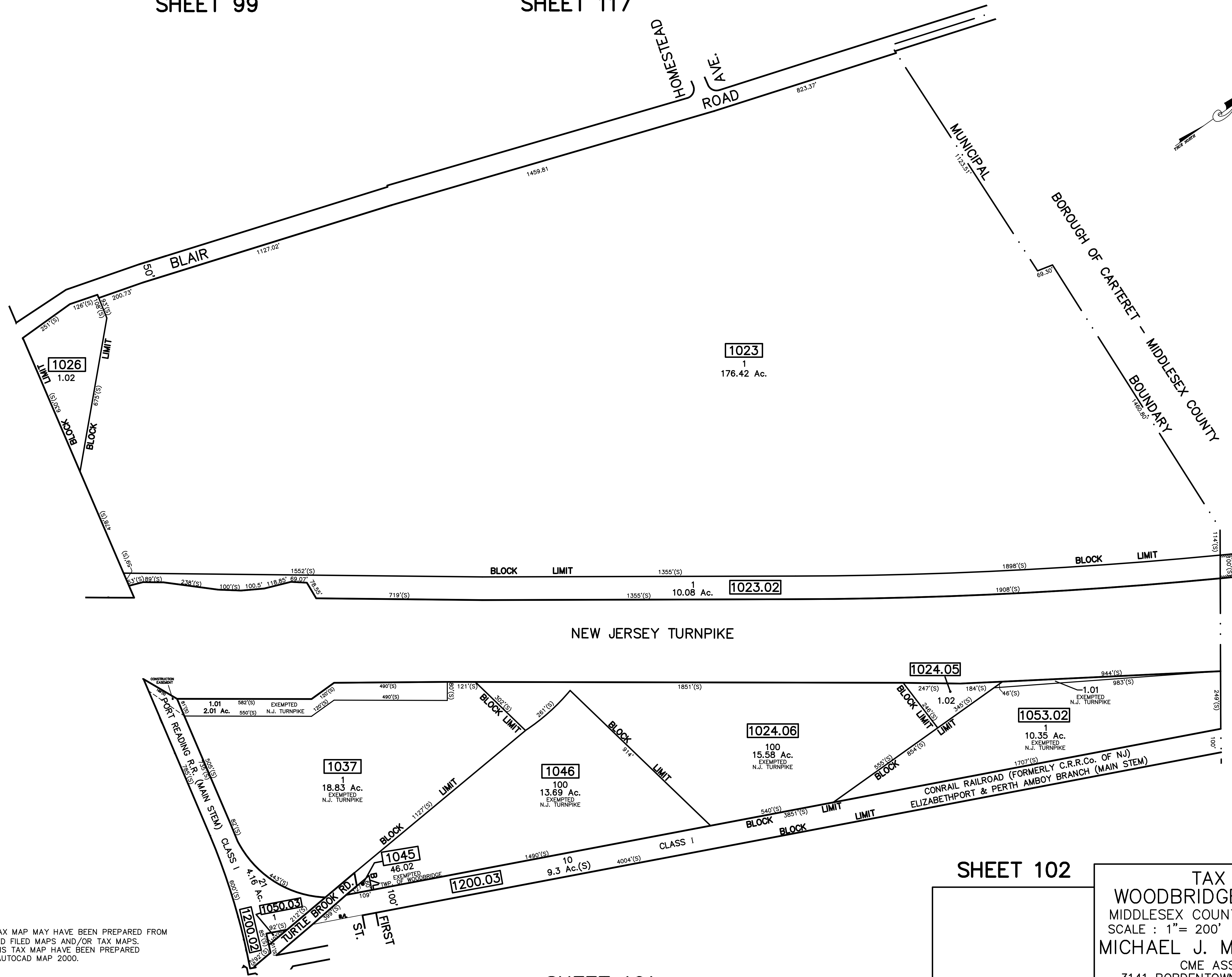
SHEET 99

SHEET 117

SHEET 84

SHEET 85

**NOTE**  
 PORTIONS OF THIS TAX MAP MAY HAVE BEEN PREPARED FROM  
 SCANNED OR DIGITIZED FILED MAPS AND/OR TAX MAPS.  
 ALL PORTIONS OF THIS TAX MAP HAVE BEEN PREPARED  
 ELECTRONICALLY IN AUTOCAD MAP 2000.



SHEET 102

SHEET 101

**TAX MAP**  
**WOODBIDGE TOWNSHIP**  
 MIDDLESEX COUNTY, NEW JERSEY  
 SCALE : 1" = 200' DATE : JUNE 2008  
**MICHAEL J. McGURL, P.L.S.**  
 CME ASSOCIATES  
 3141 BORDENTOWN AVENUE, PARLIN  
 NEW JERSEY, 08859