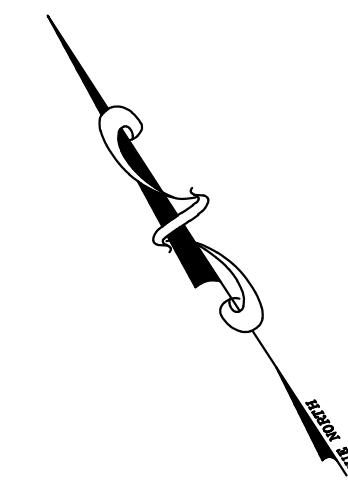
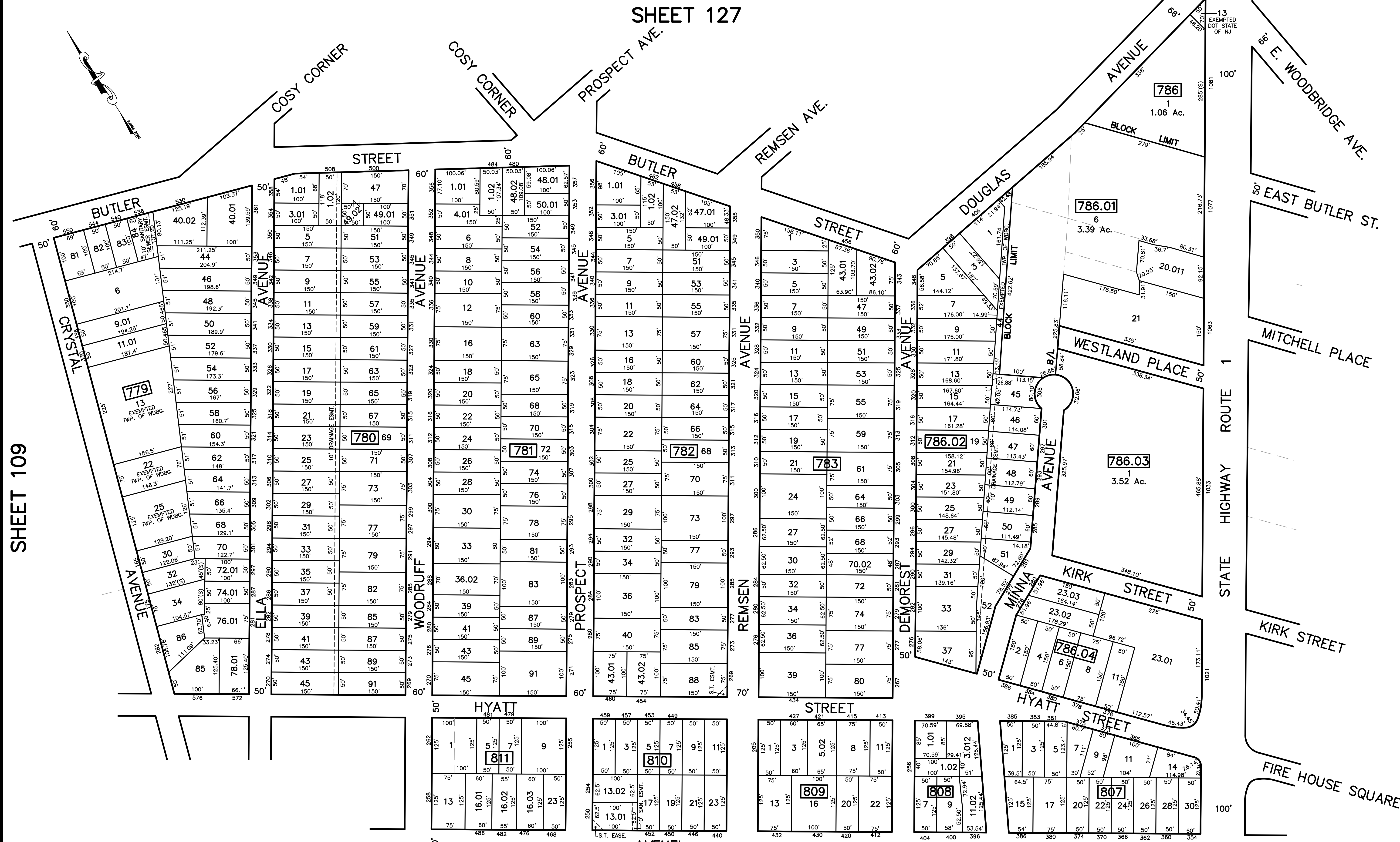


12/31/23	Tax Map Revisions	SB
12/31/21	Tax Map Revisions	SB
12/31/12	Tax Map Revisions	SB
09/03/10	Subdivision-Bk. 778, lots 9 and 11	JSE
REVISED	DESCRIPTION	
REV. BY	CHK.	



SHEET 127



SHEET 109

SHEET 129

SHEET 112

NOTE
 PORTIONS OF THIS TAX MAP MAY HAVE BEEN PREPARED FROM
 SCANNED OR DIGITIZED FILED MAPS AND/OR TAX MAPS.
 ALL PORTIONS OF THIS TAX MAP HAVE BEEN PREPARED
 ELECTRONICALLY IN AUTOCAD MAP 2000.

SHEET 110

TAX MAP
 WOODBRIDGE TOWNSHIP
 MIDDLESEX COUNTY, NEW JERSEY
 SCALE : 1" = 100' DATE : JUNE 2008
 MICHAEL J. McGURL, P.L.S.
 CME ASSOCIATES
 3141 BORDENTOWN AVENUE, PARLIN
 NEW JERSEY, 08859