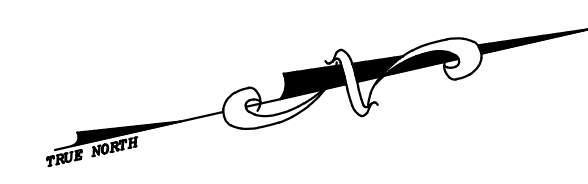


SHEET 110

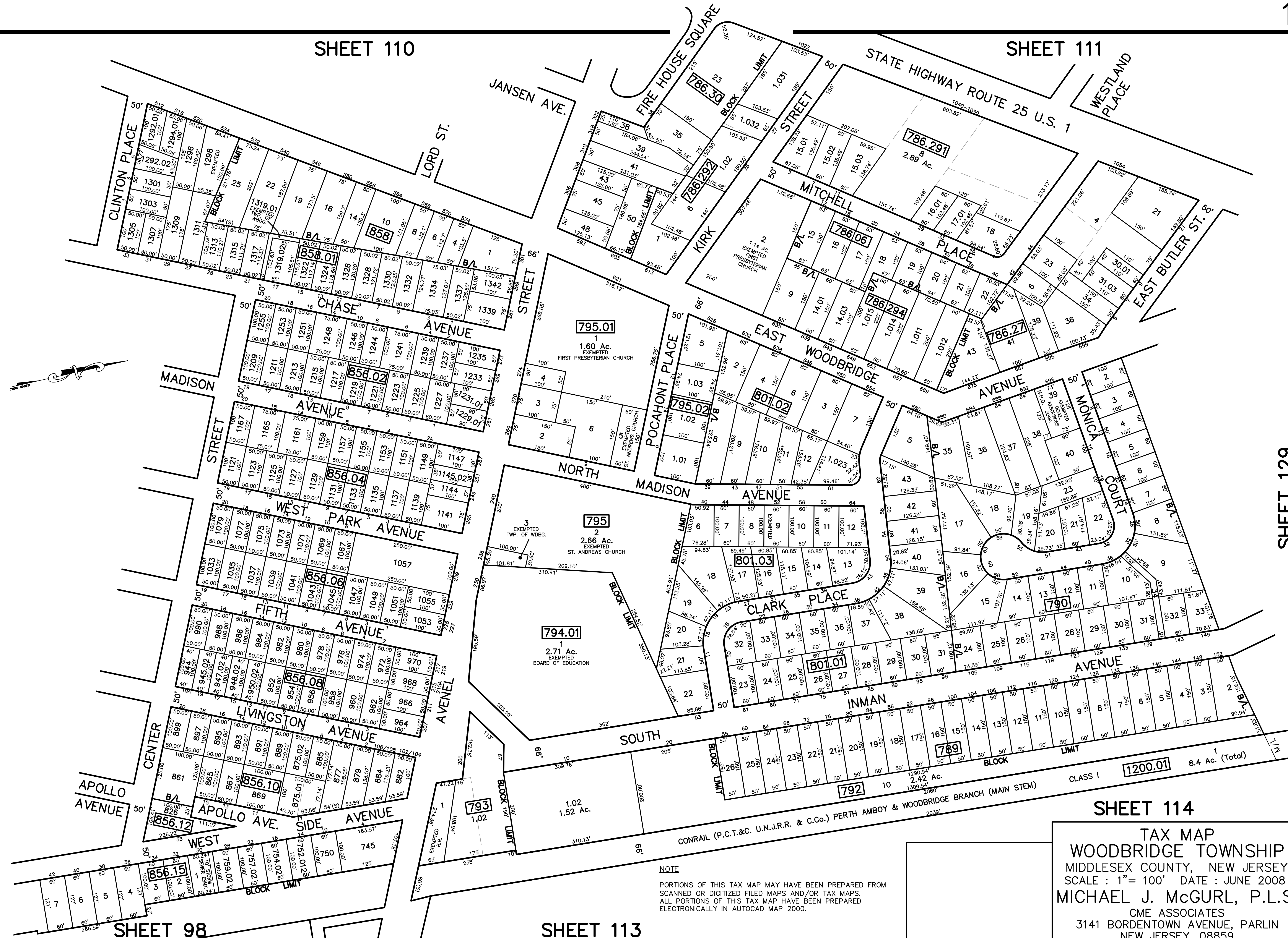
SHEET 111

| | | | | |
|----------|----------------------|----|---------|------|
| 12/31/22 | Tax Map Revisions | SR | REV. BY | CHK. |
| 12/31/13 | Tax Map Revisions | SR | | |
| | REVISION DESCRIPTION | | | |



SHEET 97

SHEET 129



SHEET 98

SHEET 113

SHEET 114

NOTE
 PORTIONS OF THIS TAX MAP MAY HAVE BEEN PREPARED FROM
 SCANNED OR DIGITIZED FILED MAPS AND/OR TAX MAPS.
 ALL PORTIONS OF THIS TAX MAP HAVE BEEN PREPARED
 ELECTRONICALLY IN AUTOCAD MAP 2000.

TAX MAP
WOODBIDGE TOWNSHIP
 MIDDLESEX COUNTY, NEW JERSEY
 SCALE : 1"= 100' DATE : JUNE 2008
MICHAEL J. McGURL, P.L.S.
 CME ASSOCIATES
 3141 BORDENTOWN AVENUE, PARLIN
 NEW JERSEY, 08859