

12/31/22	Tax Map Revisions	SR
12/31/17	Tax Map Revisions	SR
12/31/14	Tax Map Revisions	SR
12/31/13	Tax Map Revisions	SR
REVISED	DESCRIPTION	REV. BY
		CHK.

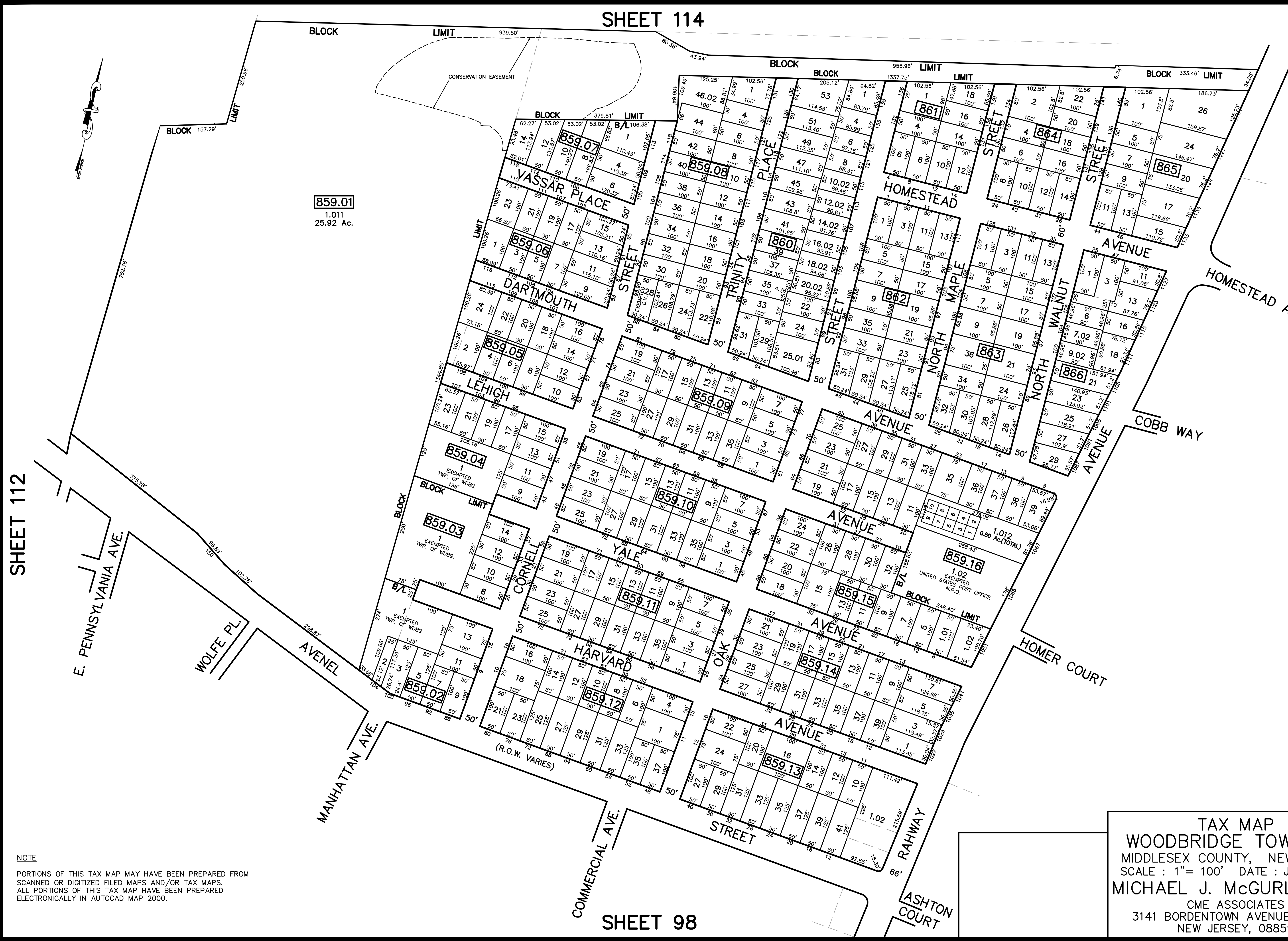


SHEET 114

SHEET 112

SHEET 116

SHEET 115



859.01
1.011
25.92 Ac.

859.16
1.02
EXEMPTED
UNITED STATES POST OFFICE
N.P.O.

NOTE
PORTIONS OF THIS TAX MAP MAY HAVE BEEN PREPARED FROM
SCANNED OR DIGITIZED FILED MAPS AND/OR TAX MAPS.
ALL PORTIONS OF THIS TAX MAP HAVE BEEN PREPARED
ELECTRONICALLY IN AUTOCAD MAP 2000.

TAX MAP
WOODBRIDGE TOWNSHIP
MIDDLESEX COUNTY, NEW JERSEY
SCALE : 1"= 100' DATE : JUNE 2008
MICHAEL J. McGURL, P.L.S.
CME ASSOCIATES
3141 BORDENTOWN AVENUE, PARLIN
NEW JERSEY, 08859

SHEET 98