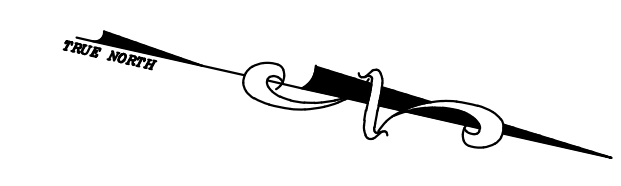
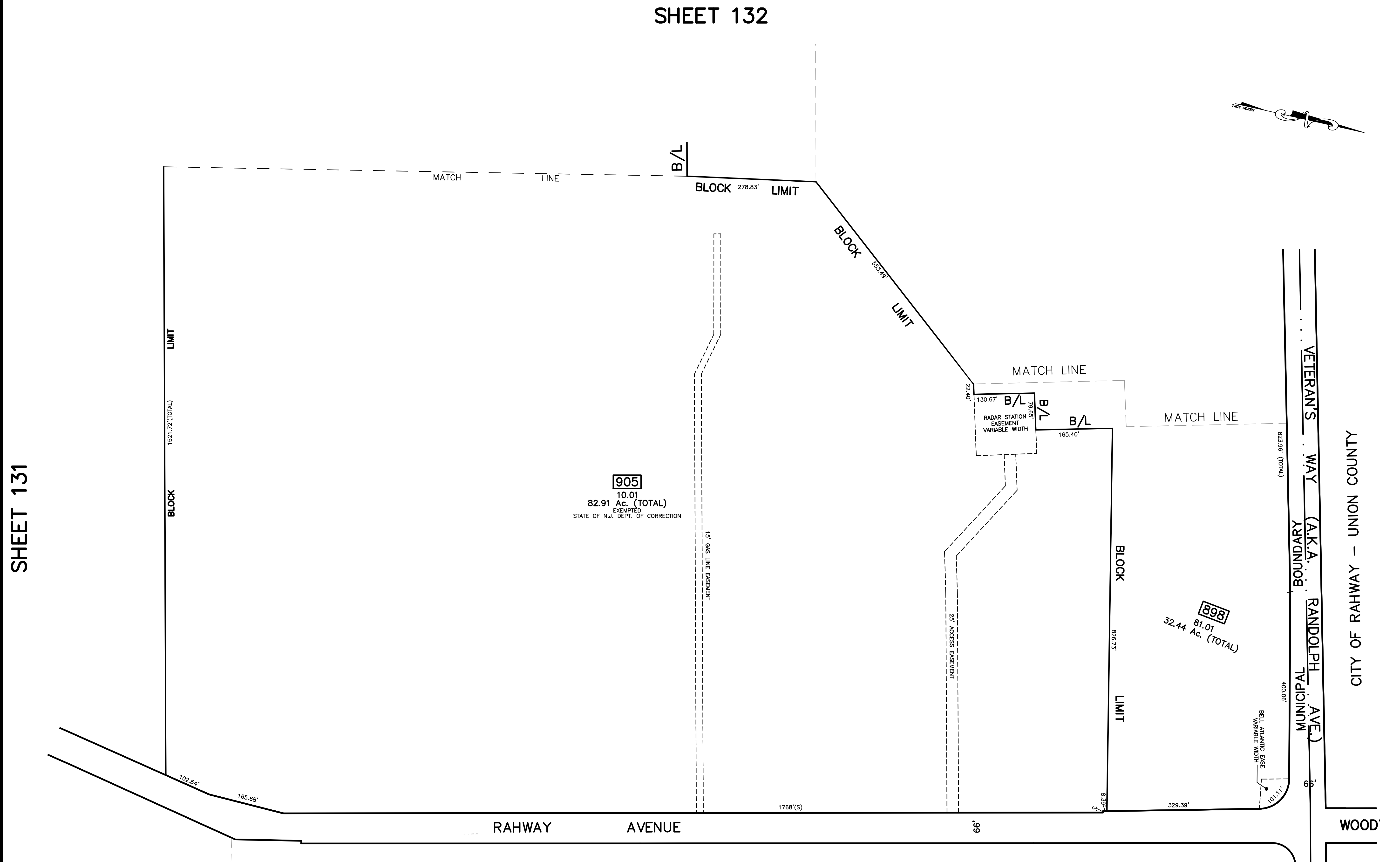


SHEET 132



12/31/12	Top Map Revisions	SR	REV. BY	CHK.
12/31/12	Top Map Revisions	SR		
	REVISION			
	DESCRIPTION			



**905**  
 10.01  
 82.91 Ac. (TOTAL)  
 EXEMPTED  
 STATE OF N.J. DEPT. OF CORRECTION

**698**  
 81.01  
 32.44 Ac. (TOTAL)

TAX MAP  
 WOODBRIDGE TOWNSHIP  
 MIDDLESEX COUNTY, NEW JERSEY  
 SCALE : 1" = 100' DATE : JUNE 2008  
 MICHAEL J. McGURL, P.L.S.  
 CME ASSOCIATES  
 3141 BORDENTOWN AVENUE, PARLIN  
 NEW JERSEY, 08859

NOTE  
 PORTIONS OF THIS TAX MAP MAY HAVE BEEN PREPARED FROM  
 SCANNED OR DIGITIZED FILED MAPS AND/OR TAX MAPS.  
 ALL PORTIONS OF THIS TAX MAP HAVE BEEN PREPARED  
 ELECTRONICALLY IN AUTOCAD MAP 2000.

SHEET 135