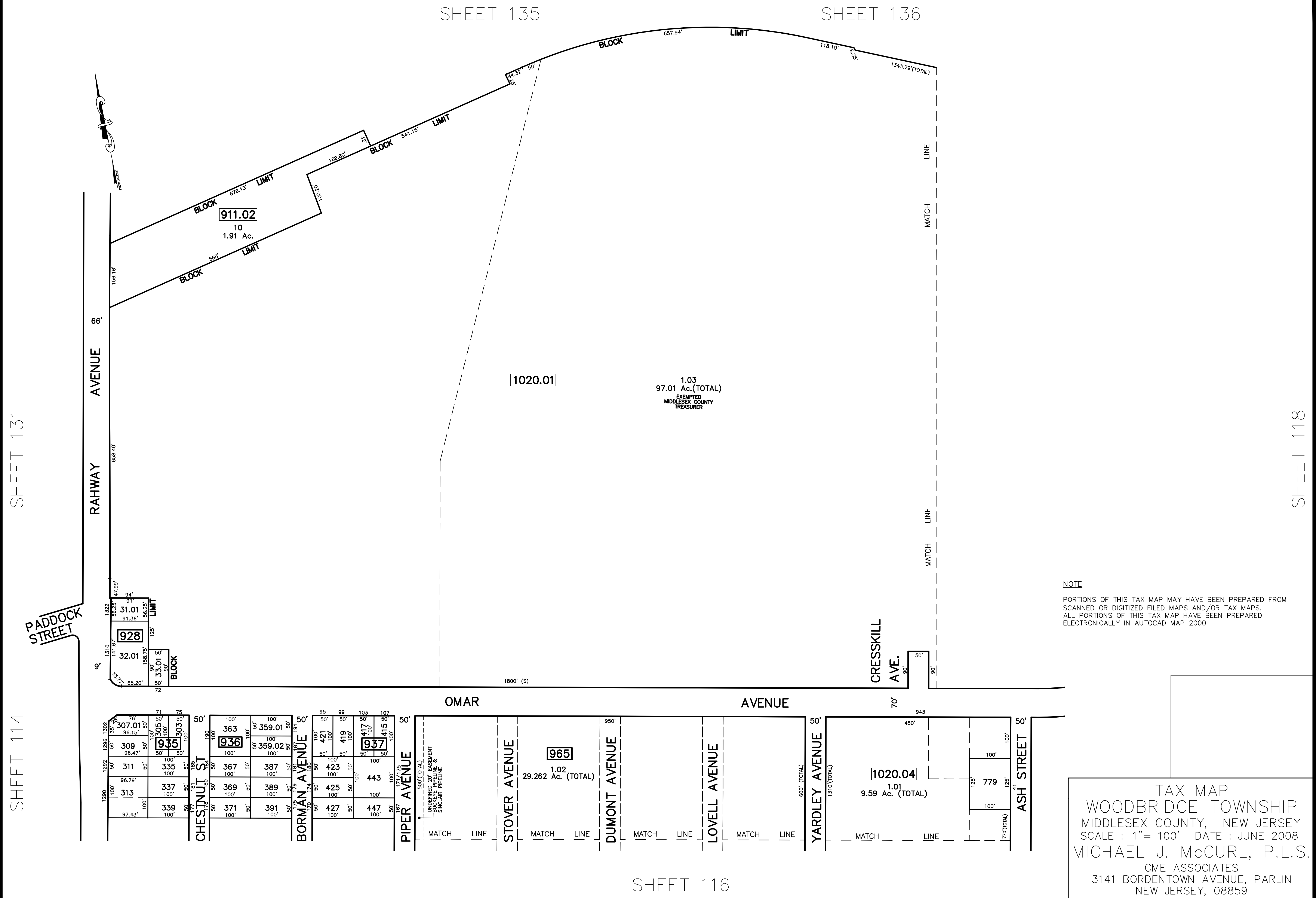


12/31/18	SB	Tax Map Revisions
12/31/16	SB	Tax Map Revisions
12/31/14	SB	Tax Map Revisions
12/31/12	SB	Tax Map Revisions
10/04/10	JSE	R.O.M. Takings-BK 828, lots 31 and 32
REVISED	DESCRIPTION	
REV. BY	CHK.	



NOTE
 PORTIONS OF THIS TAX MAP MAY HAVE BEEN PREPARED FROM
 SCANNED OR DIGITIZED FILED MAPS AND/OR TAX MAPS.
 ALL PORTIONS OF THIS TAX MAP HAVE BEEN PREPARED
 ELECTRONICALLY IN AUTOCAD MAP 2000.

TAX MAP
 WOODBRIDGE TOWNSHIP
 MIDDLESEX COUNTY, NEW JERSEY
 SCALE : 1" = 100' DATE : JUNE 2008
 MICHAEL J. McGURL, P.L.S.
 CME ASSOCIATES
 3141 BORDENTOWN AVENUE, PARLIN
 NEW JERSEY, 08859

SHEET 135

SHEET 136

SHEET 131

SHEET 118

SHEET 114

SHEET 116