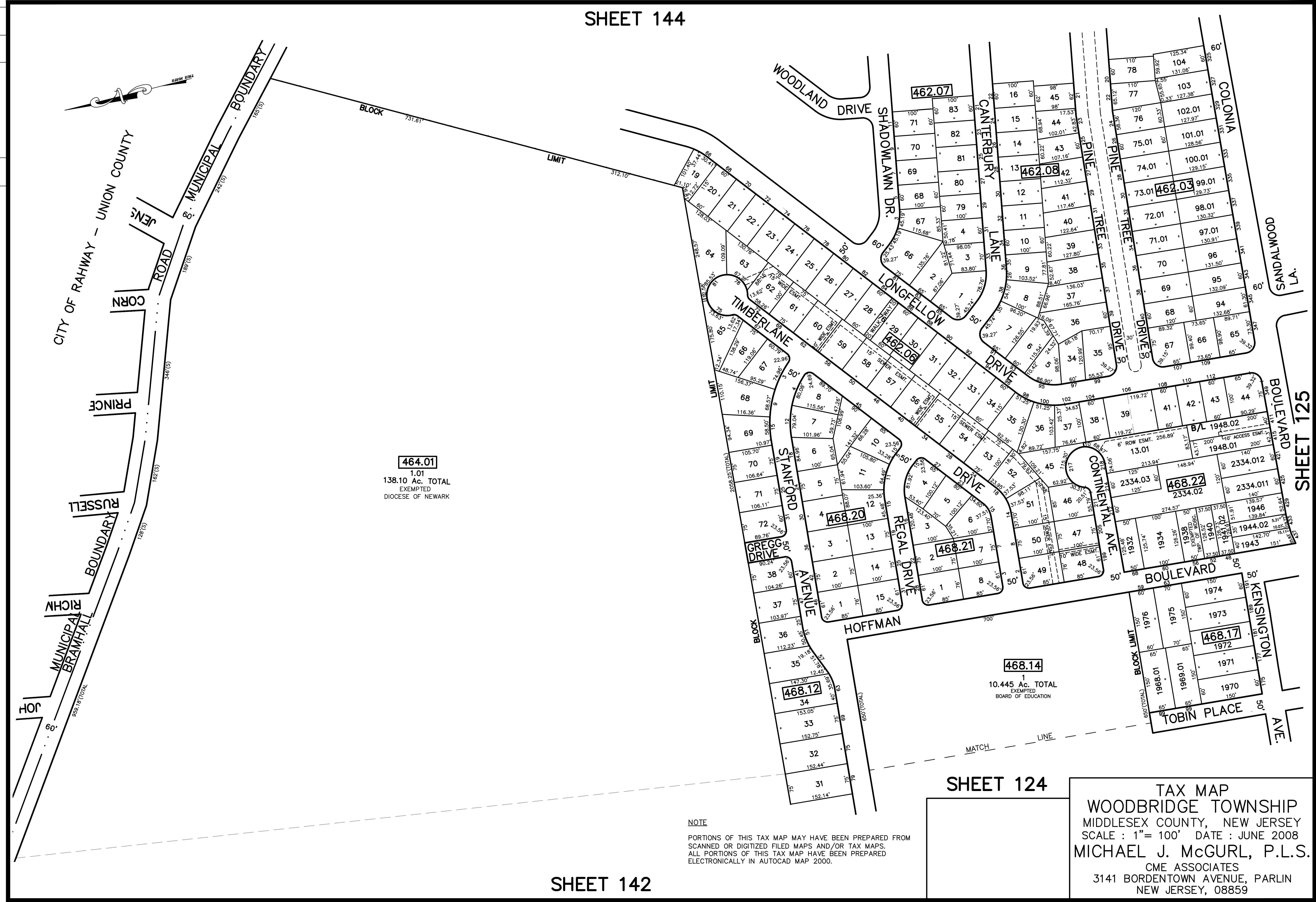


SHEET 144

12/31/13 Tax Map Revisions	REVISION	DESCRIPTION
SB	REV. BY	CHK.



464.01
 1.01
 138.10 Ac. TOTAL
 EXEMPTED
 DIOCESE OF NEWARK

468.14
 1
 10.445 Ac. TOTAL
 EXEMPTED
 BOARD OF EDUCATION

NOTE
 PORTIONS OF THIS TAX MAP MAY HAVE BEEN PREPARED FROM
 SCANNED OR DIGITIZED FILED MAPS AND/OR TAX MAPS.
 ALL PORTIONS OF THIS TAX MAP HAVE BEEN PREPARED
 ELECTRONICALLY IN AUTOCAD MAP 2000.

TAX MAP
WOODBIDGE TOWNSHIP
 MIDDLESEX COUNTY, NEW JERSEY
 SCALE : 1" = 100' DATE : JUNE 2008
MICHAEL J. McGURL, P.L.S.
 CME ASSOCIATES
 3141 BORDENTOWN AVENUE, PARLIN
 NEW JERSEY, 08859

SHEET 142

SHEET 124

SHEET 125