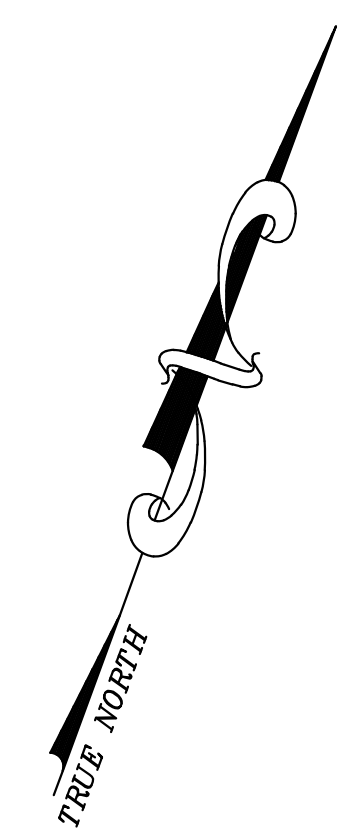


12/31/16	Top Map Revisions	SB
12/31/14	Top Map Revisions	SB
12/31/13	Top Map Revisions	SB
11/2/11	Block 93, lot 100 & Block 83 lot 1-5 SMTS	SB
9/19/10	MCUA Easement-Blk 51, lots 2 and 2.03	JSE
9/16/10	Land area: Blk 75.01, lots 1.00 and 1.04 - Blk 75, it to	JSE
09/08/10	R.O.M. Tdng. Blk 75.01, lots 1.03, 1.04	JSE
REVISED	DESCRIPTION	REV. BY
		CHK.

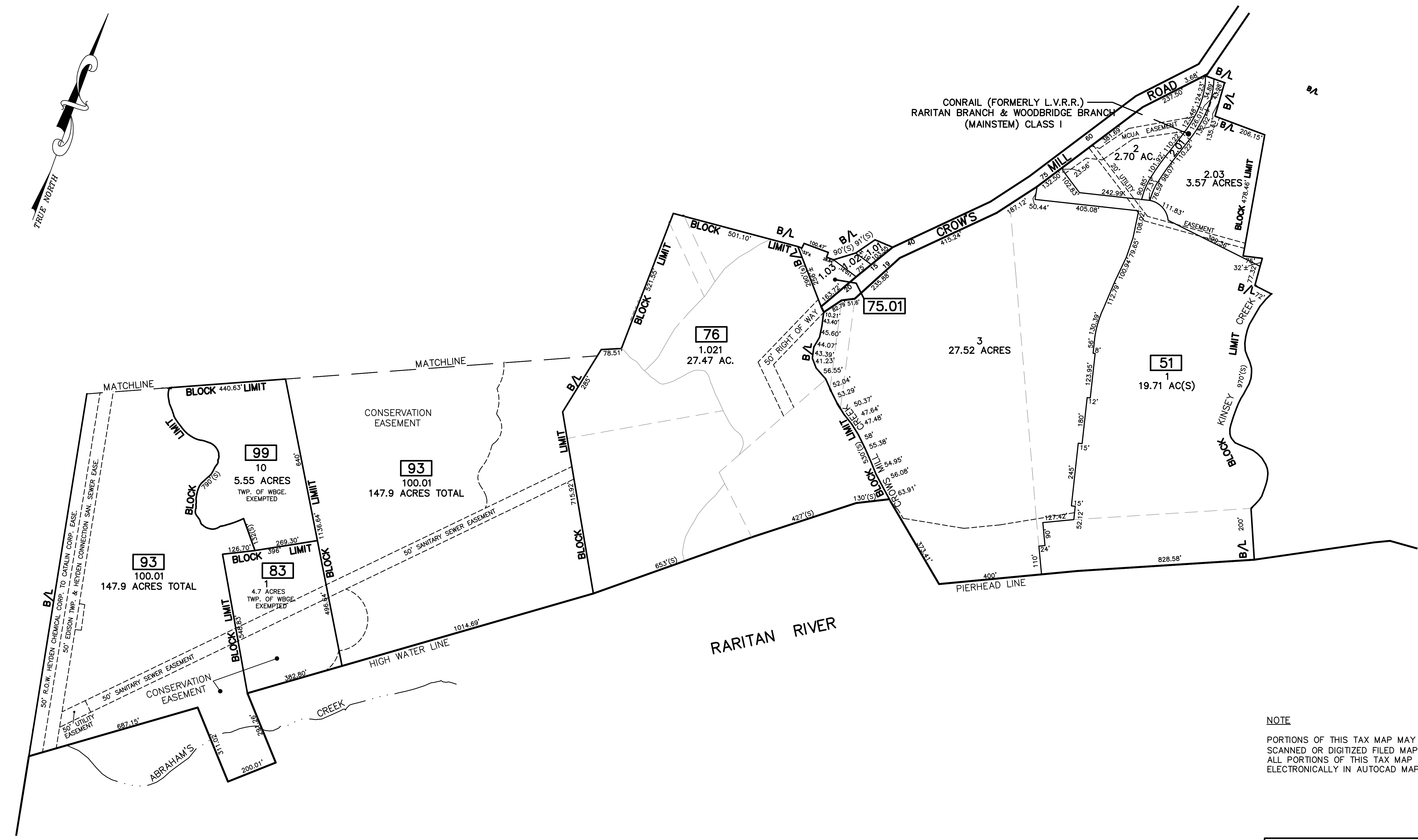
SHEET 4

SHEET 5



SHEET 1

SHEET 5



NOTE
 PORTIONS OF THIS TAX MAP MAY HAVE BEEN PREPARED FROM
 SCANNED OR DIGITIZED FILED MAPS AND/OR TAX MAPS.
 ALL PORTIONS OF THIS TAX MAP HAVE BEEN PREPARED
 ELECTRONICALLY IN AUTOCAD MAP 2000.

TAX MAP
 WOODBRIDGE TOWNSHIP
 MIDDLESEX COUNTY, NEW JERSEY
 SCALE : 1" = 200' DATE : JUNE 2008
 MICHAEL J. McGURL, P.L.S.
 CME ASSOCIATES
 3141 BORDENTOWN AVENUE, PARLIN
 NEW JERSEY, 08859