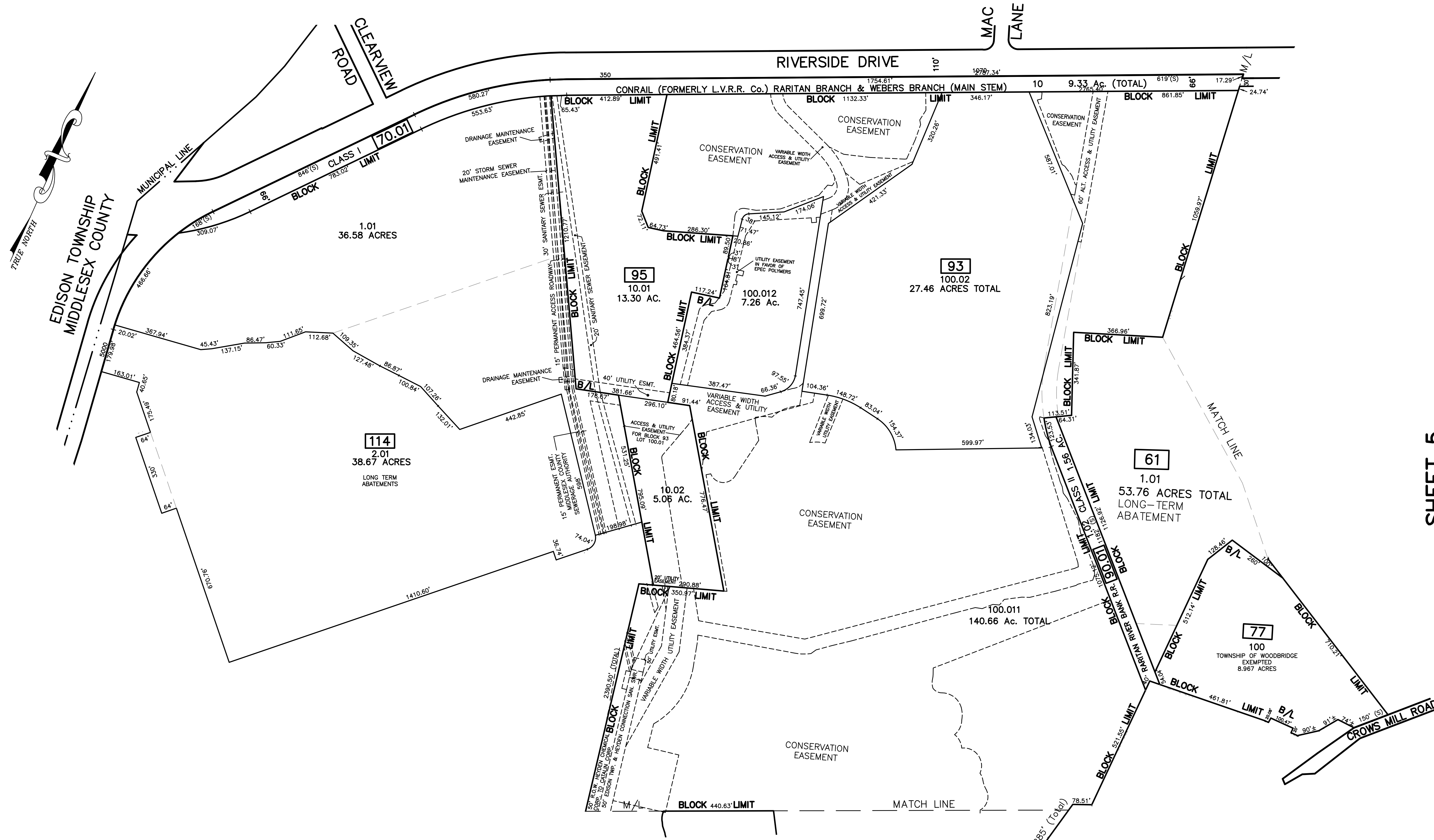


12/31/24	Tax Map Revisions	SB	REV. BY	CHK.
12/31/16	Tax Map Revisions	SB		
12/31/15	Tax Map Revisions	SB		
12/31/14	Tax Map Revisions	SB		
12/31/13	Tax Map Revisions	SB		
12/31/12	Tax Map Revisions	SB		
11/02/11	Bl. 93 L. 100 & Bl. 95 Lot 10.02-Easements	SB		
REVISED	DESCRIPTION			

SHEET 7



SHEET 1

SHEET 2

SHEET 5

NOTE
 PORTIONS OF THIS TAX MAP MAY HAVE BEEN PREPARED FROM
 SCANNED OR DIGITIZED FILED MAPS AND/OR TAX MAPS.
 ALL PORTIONS OF THIS TAX MAP HAVE BEEN PREPARED
 ELECTRONICALLY IN AUTOCAD MAP 2000.

TAX MAP
 WOODBRIDGE TOWNSHIP
 MIDDLESEX COUNTY, NEW JERSEY
 SCALE : 1"= 200' DATE : JUNE 2008
 MICHAEL J. McGURL, P.L.S.
 CME ASSOCIATES
 3141 BORDENTOWN AVENUE, PARLIN
 NEW JERSEY, 08859