

12/31/13	Tax Map Revisions	SB
12/31/12	Tax Map Revisions	SB
10/13/10	Various Easements-Bk 182.03, lot 1.01, 2	JSE
10/12/10	Easement, Vacations-Bk 182.03, lot 1.01, 2	JSE
REVISED	DESCRIPTION	REV. BY
		CHK.

SHEET 25

SHEET 32

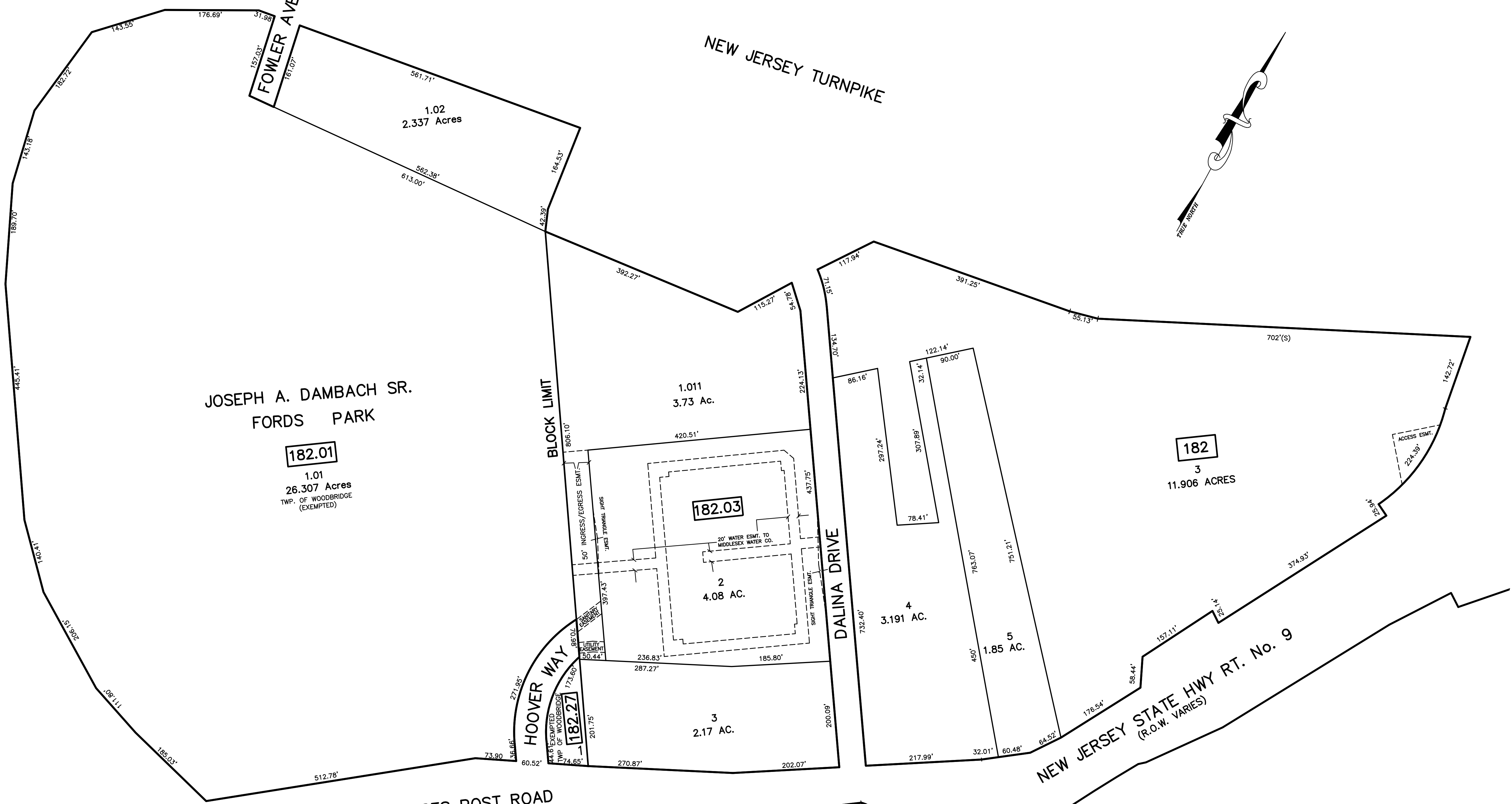
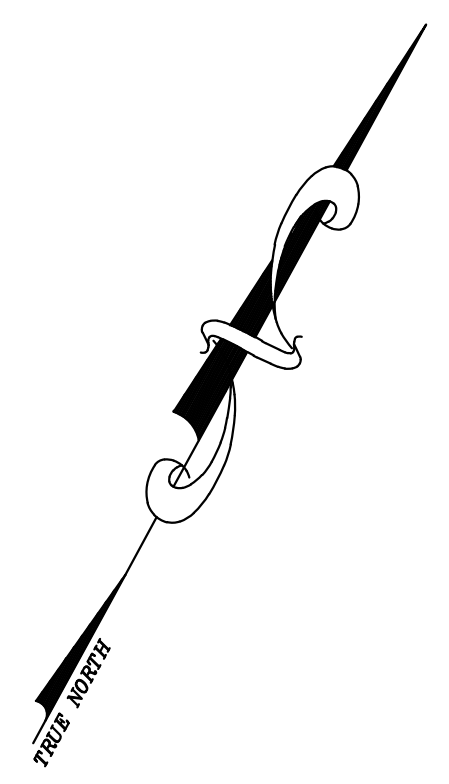
SHEET 20

SHEET 26

GARDEN STATE PARKWAY

JOSEPH A. DAMBACH SR.
FORDS PARK

NEW JERSEY TURNPIKE



182.01
1.01
26.307 Acres
TWP. OF WOODBRIDGE
(EXEMPTED)

182.03
2
4.08 AC.

182
3
11.906 ACRES

182.27
3
2.17 AC.

4
3.191 AC.

5
1.85 AC.

2
1.80 AC.
(EXEMPTED)
STATE OF NJ
DEPT OF TRANS

198.01
1.01
1.896 AC.

1.02
1.840 AC.

199.01
1.01

NOTE
PORTIONS OF THIS TAX MAP MAY HAVE BEEN PREPARED FROM
SCANNED OR DIGITIZED FILED MAPS AND/OR TAX MAPS.
ALL PORTIONS OF THIS TAX MAP HAVE BEEN PREPARED
ELECTRONICALLY IN AUTOCAD MAP 2000.

TAX MAP
WOODBRIDGE TOWNSHIP
MIDDLESEX COUNTY, NEW JERSEY
SCALE : 1"= 100' DATE : JUNE 2008
MICHAEL J. McGURL, P.L.S.
CME ASSOCIATES
3141 BORDENTOWN AVENUE, PARLIN
NEW JERSEY, 08859

NEW JERSEY STATE HIGHWAY RT. No. 184

KING GEORGES POST ROAD

NEW JERSEY STATE HWY RT. No. 9
(R.O.W. VARIES)

DALINA DRIVE

FOWLER AVEN

BLOCK LIMIT

BLOCK LIMIT

SHEET 16

SHEET 22