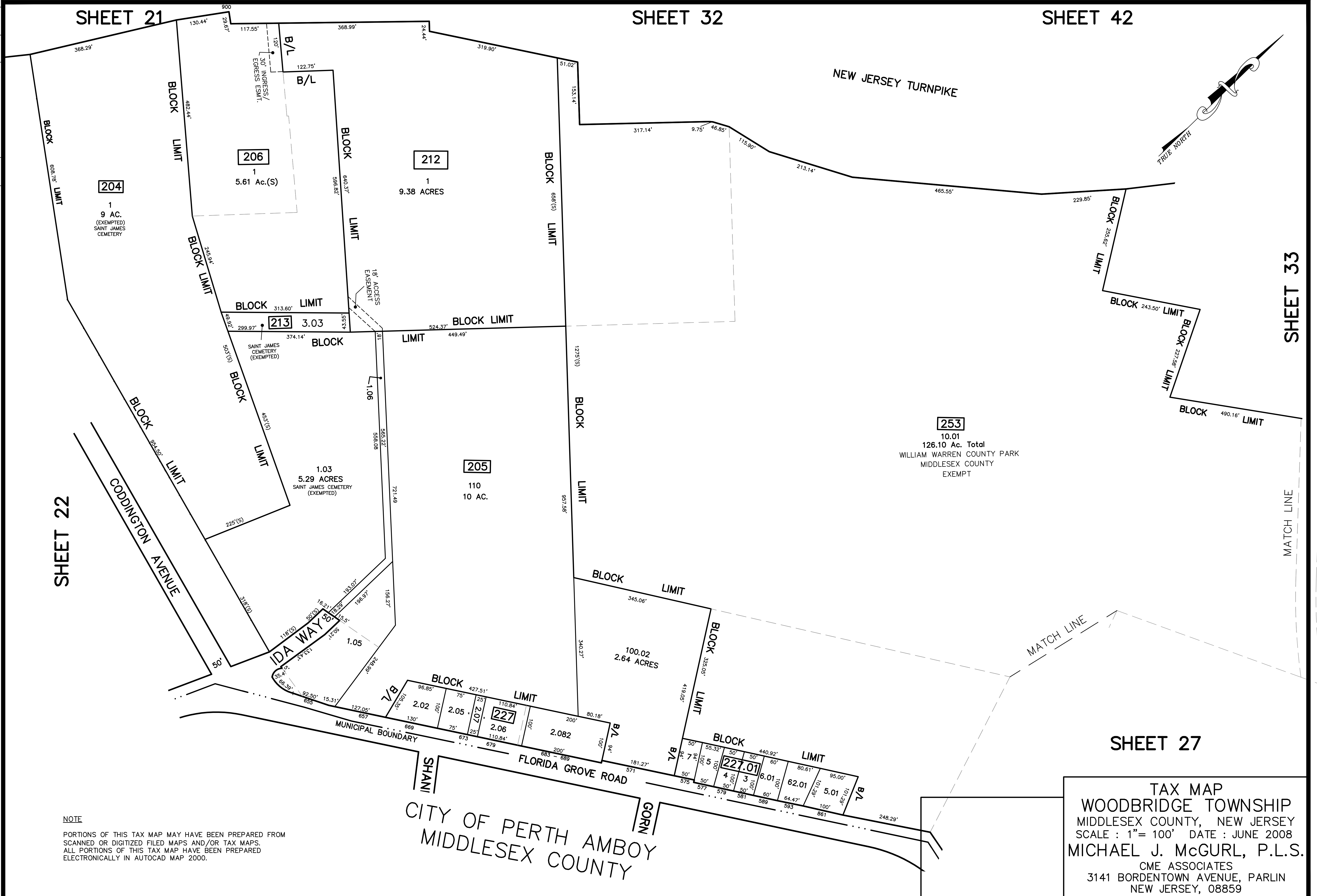


REV.	BY	CHK.	DESCRIPTION
12/31/15	SR		Tax Map Revisions
12/31/14	SR		Tax Map Revisions
12/31/14	SR		Tax Map Revisions
12/31/12	SR		Tax Map Revisions
			REVISED



SHEET 22

SHEET 21

SHEET 32

SHEET 42

SHEET 33

SHEET 27

NOTE  
 PORTIONS OF THIS TAX MAP MAY HAVE BEEN PREPARED FROM  
 SCANNED OR DIGITIZED FILED MAPS AND/OR TAX MAPS.  
 ALL PORTIONS OF THIS TAX MAP HAVE BEEN PREPARED  
 ELECTRONICALLY IN AUTOCAD MAP 2000.

CITY OF PERTH AMBOY  
 MIDDLESEX COUNTY

TAX MAP  
 WOODBRIDGE TOWNSHIP  
 MIDDLESEX COUNTY, NEW JERSEY  
 SCALE : 1"= 100' DATE : JUNE 2008  
 MICHAEL J. McGURL, P.L.S.  
 CME ASSOCIATES  
 3141 BORDENTOWN AVENUE, PARLIN  
 NEW JERSEY, 08859