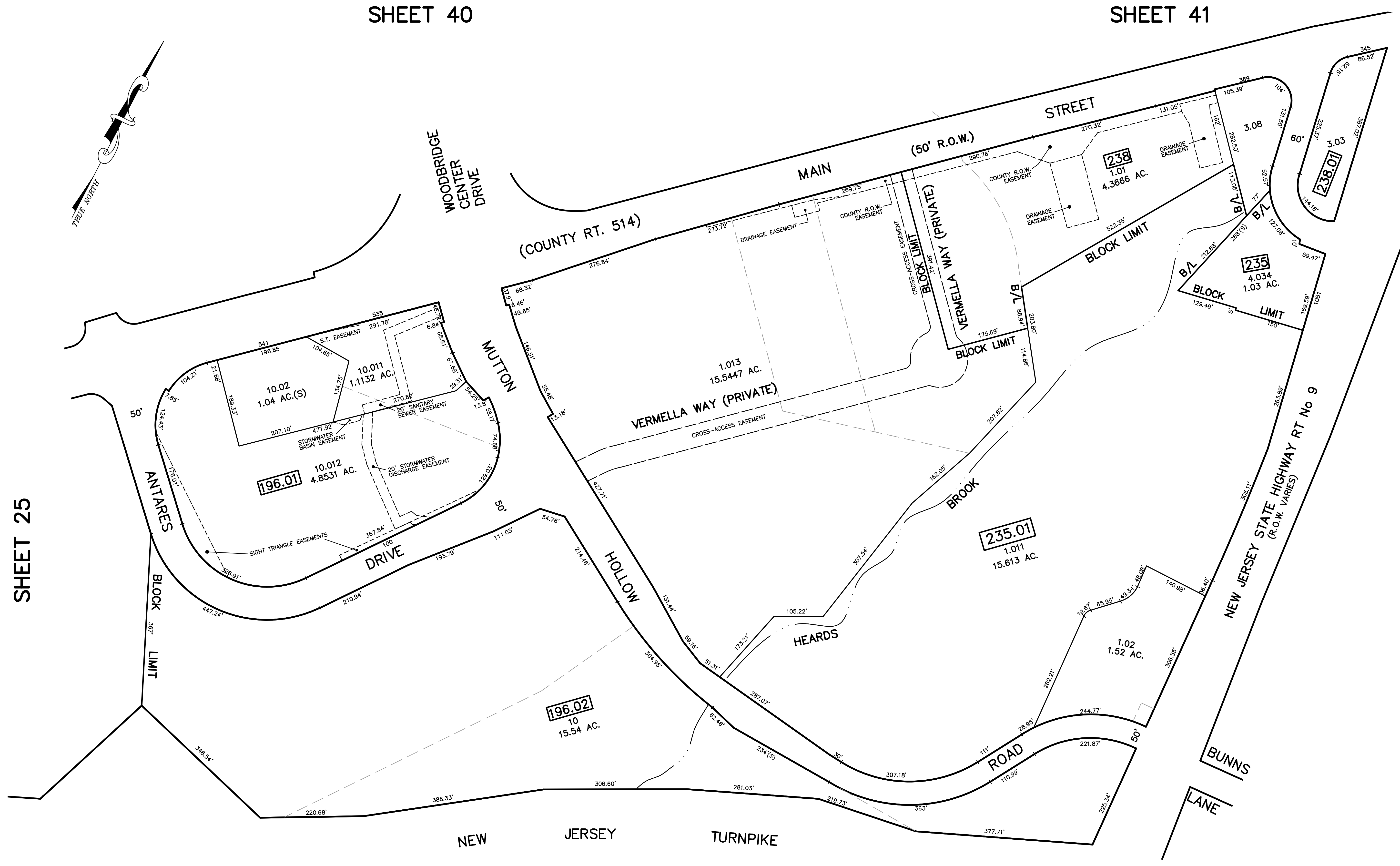
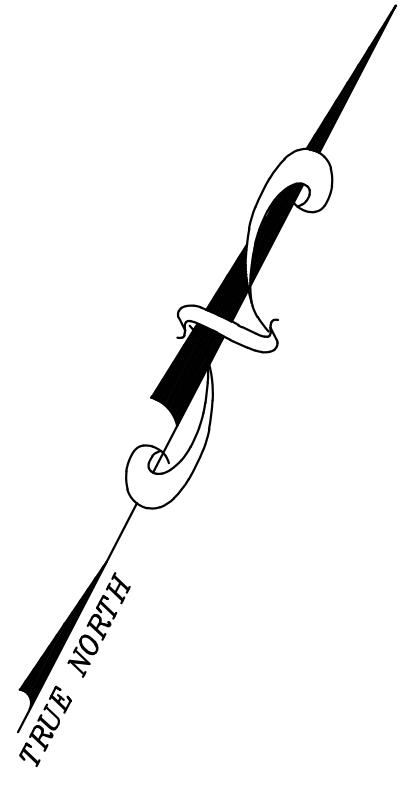


SHEET 40

SHEET 41

12/31/21	Tox Map Revisions	SB
12/31/15	Tox Map Revisions	SB
12/31/13	Tox Map Revisions	SB
12/31/12	Tox Map Revisions	SB
REVISED	DESCRIPTION	REV. BY
		CHK.



SHEET 25

SHEET 42

SHEET 21

SHEET 26

NOTE
 PORTIONS OF THIS TAX MAP MAY HAVE BEEN PREPARED FROM
 SCANNED OR DIGITIZED FILED MAPS AND/OR TAX MAPS.
 ALL PORTIONS OF THIS TAX MAP HAVE BEEN PREPARED
 ELECTRONICALLY IN AUTOCAD MAP 2000.

TAX MAP
 WOODBRIDGE TOWNSHIP
 MIDDLESEX COUNTY, NEW JERSEY
 SCALE : 1"= 100' DATE : JUNE 2008
 MICHAEL J. McGURL, P.L.S.
 CME ASSOCIATES
 3141 BORDENTOWN AVENUE, PARLIN
 NEW JERSEY, 08859