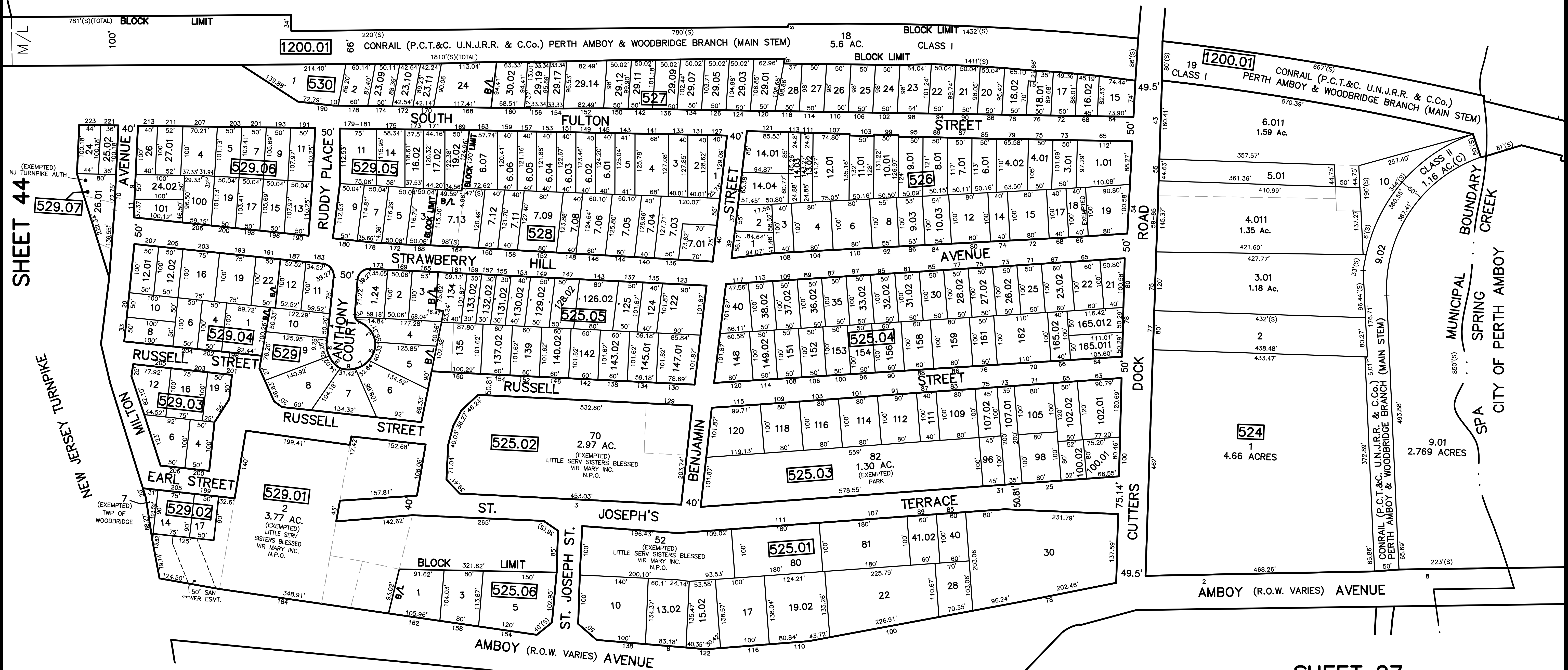
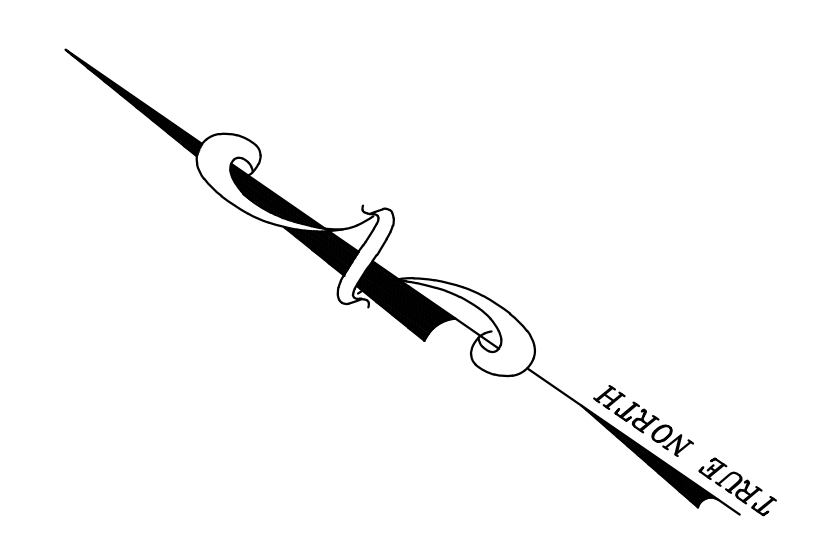


12/23/24	Tax Map Revisions	SR
12/31/13	Tax Map Revisions	SR
12/31/12	Tax Map Revisions	SR
11/20/10	Subdivision-Bk. 525.01, lot 40	USE
09/10/10	Access Easement-Bk. 524, lot 7.02	USE
09/03/10	Subdivision-Bk. 525.01, lots 19.02, 22, 28	USE
REVISED	DESCRIPTION	
REV. BY	CHK.	



**NOTE**  
 PORTIONS OF THIS TAX MAP MAY HAVE BEEN PREPARED FROM  
 SCANNED OR DIGITIZED FILED MAPS AND/OR TAX MAPS.  
 ALL PORTIONS OF THIS TAX MAP HAVE BEEN PREPARED  
 ELECTRONICALLY IN AUTOCAD MAP 2000.

**TAX MAP**  
**WOODBIDGE TOWNSHIP**  
 MIDDLESEX COUNTY, NEW JERSEY  
 SCALE : 1" = 100' DATE : JUNE 2008  
**MICHAEL J. McGURL, P.L.S.**  
 CME ASSOCIATES  
 3141 BORDENTOWN AVENUE, PARLIN  
 NEW JERSEY, 08859