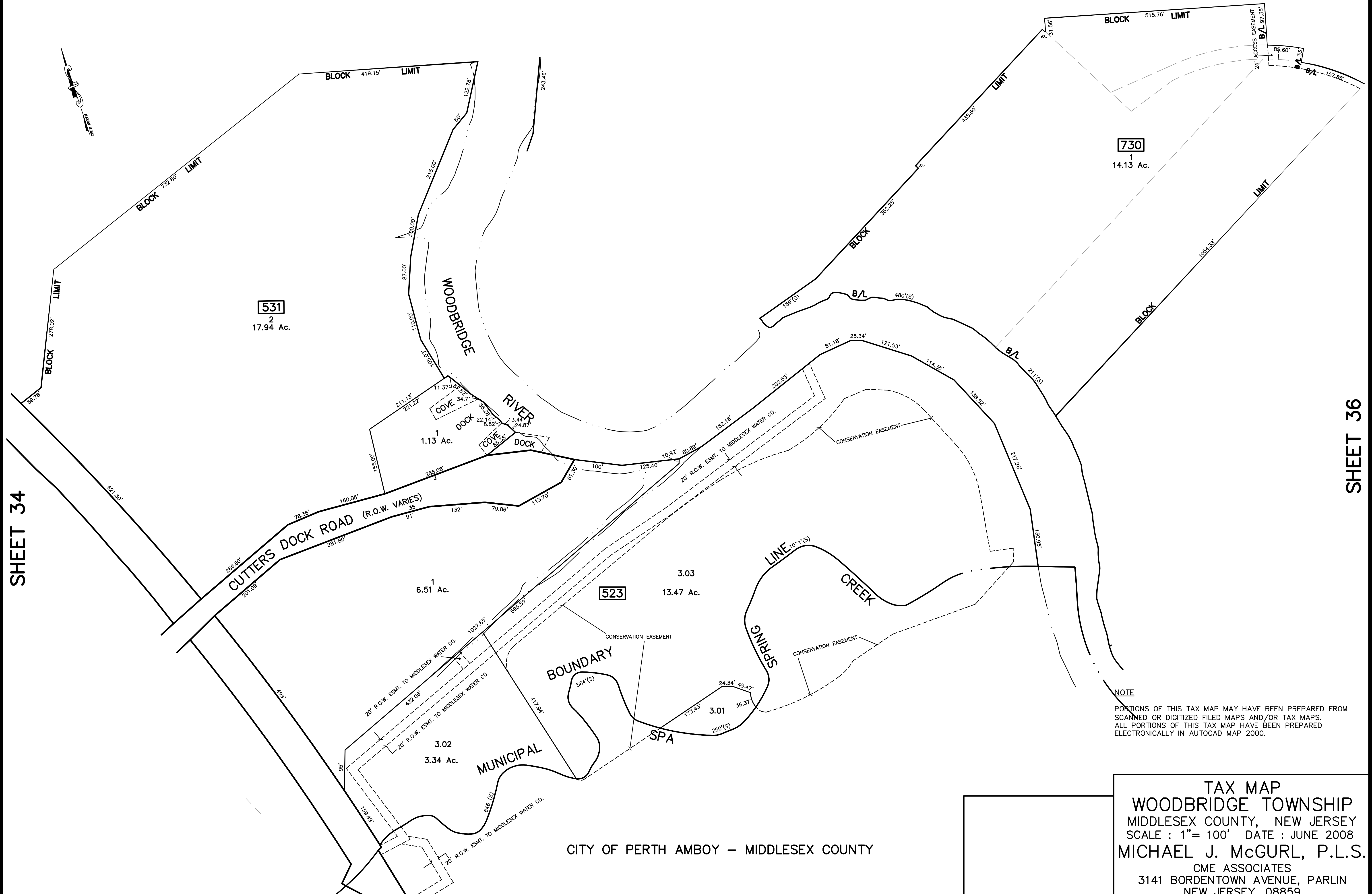


12/21/12	Top Map Revisions	SB
12/29/10	Added Conservation Easements	JSE
REVISED	DESCRIPTION	REV. BY
		CHK.

SHEET 45

SHEET 46



730
1
14.13 Ac.

531
2
17.94 Ac.

1
6.51 Ac.

523
3.03
13.47 Ac.

3.02
3.34 Ac.

3.01

NOTE
PORTIONS OF THIS TAX MAP MAY HAVE BEEN PREPARED FROM
SCANNED OR DIGITIZED FILED MAPS AND/OR TAX MAPS.
ALL PORTIONS OF THIS TAX MAP HAVE BEEN PREPARED
ELECTRONICALLY IN AUTOCAD MAP 2000.

TAX MAP
WOODBIDGE TOWNSHIP
MIDDLESEX COUNTY, NEW JERSEY
SCALE : 1"= 100' DATE : JUNE 2008
MICHAEL J. MCGURL, P.L.S.
CME ASSOCIATES
3141 BORDENTOWN AVENUE, PARLIN
NEW JERSEY, 08859

CITY OF PERTH AMBOY – MIDDLESEX COUNTY

SHEET 34

SHEET 36