

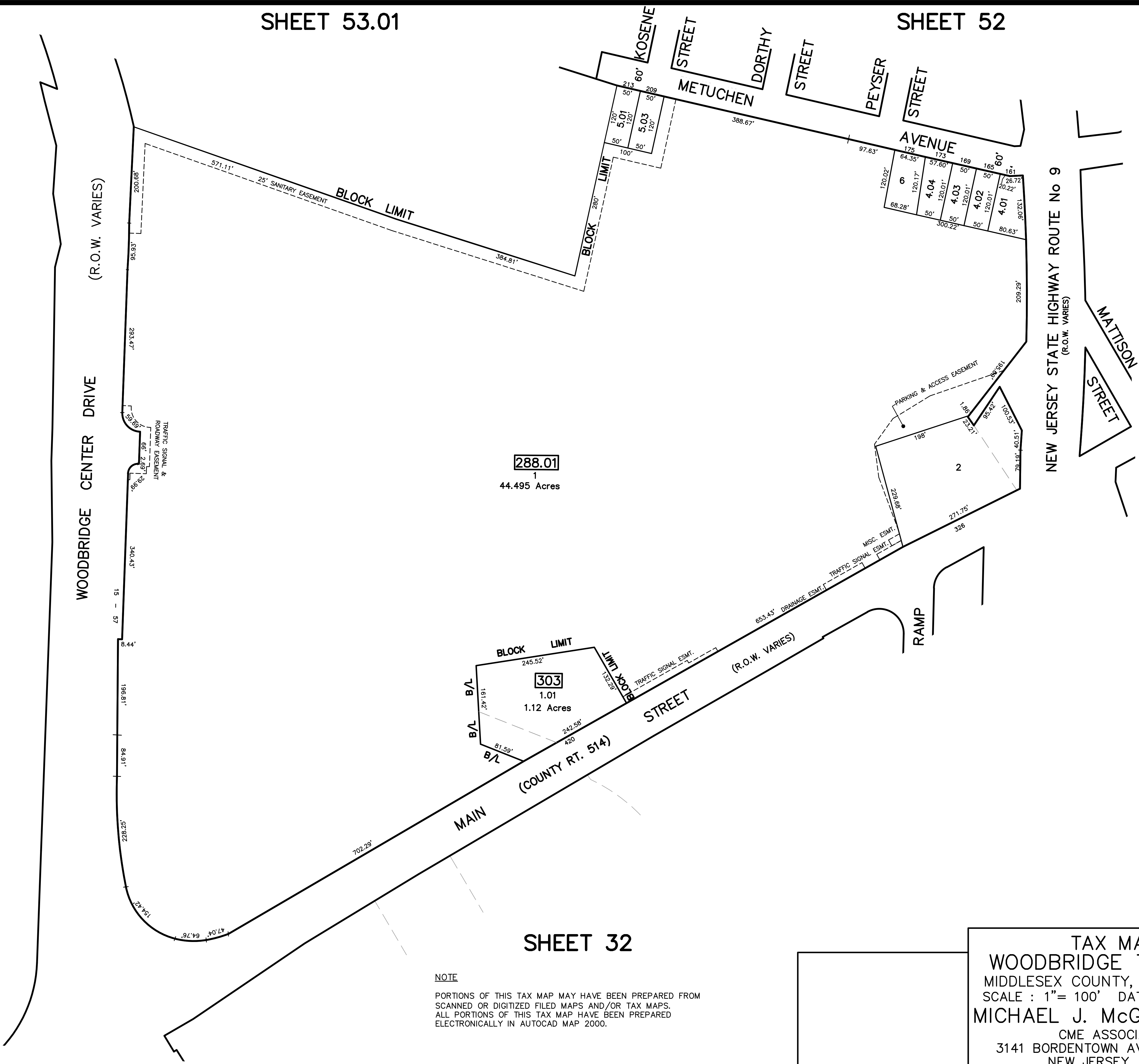
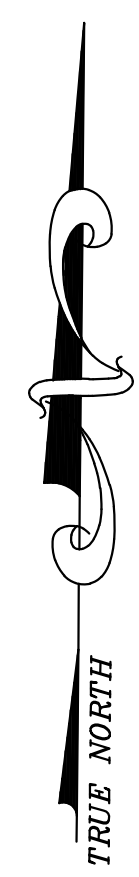
SHEET 53.01

SHEET 52

SHEET 40

SHEET 54

REVISED	DESCRIPTION	REV. BY	CHK.
12/31/17	Tax Map Revisions	SB	
12/31/14	Tax Map Revisions	SB	
12/31/13	Tax Map Revisions	SB	



288.01
44.495 Acres

303
1.01
1.12 Acres

NOTE
PORTIONS OF THIS TAX MAP MAY HAVE BEEN PREPARED FROM
SCANNED OR DIGITIZED FILED MAPS AND/OR TAX MAPS.
ALL PORTIONS OF THIS TAX MAP HAVE BEEN PREPARED
ELECTRONICALLY IN AUTOCAD MAP 2000.

SHEET 32

TAX MAP
WOODBRIDGE TOWNSHIP
MIDDLESEX COUNTY, NEW JERSEY
SCALE : 1" = 100' DATE : JUNE 2008
MICHAEL J. McGURL, P.L.S.
CME ASSOCIATES
3141 BORDENTOWN AVENUE, PARLIN
NEW JERSEY, 08859