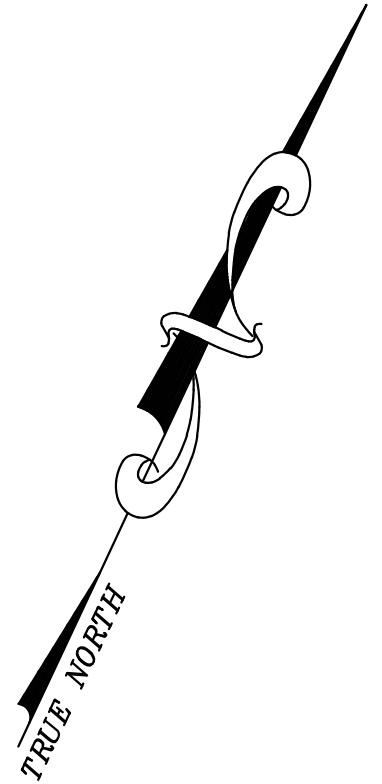
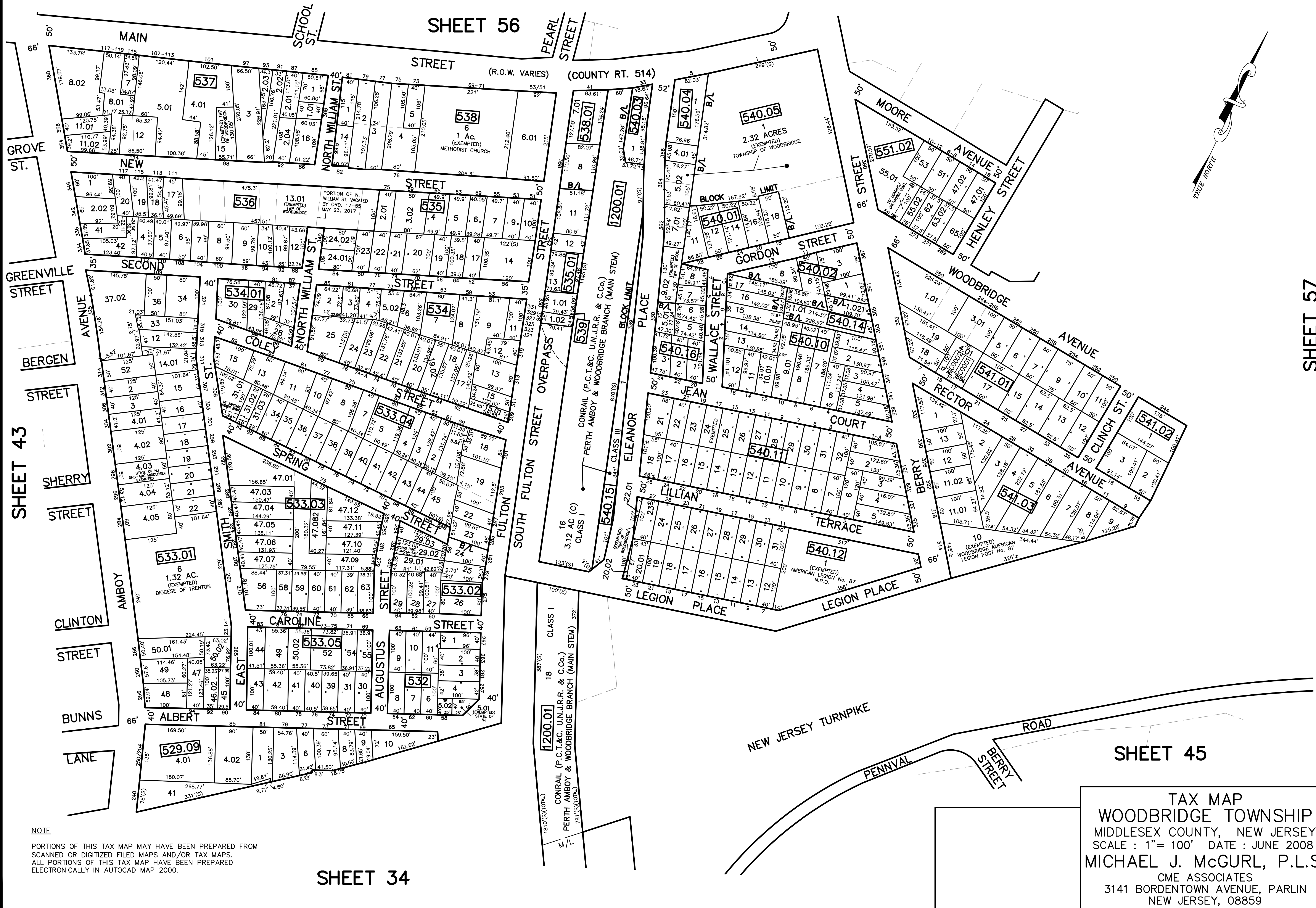


12/31/22	Tax Map Revisions	SB
12/31/20	Tax Map Revisions	SB
12/31/19	Tax Map Revisions	SB
12/31/18	Tax Map Revisions	SB
12/31/17	Tax Map Revisions	SB
12/31/16	Tax Map Revisions	SB
12/31/15	Tax Map Revisions	SB
12/31/14	Tax Map Revisions	SB
12/31/13	Tax Map Revisions	SB
12/31/12	Tax Map Revisions	SB
11/01/10	List consolidations-RE 531.01	USE
09/03/10	Corrections-BK 536, lot 41 and 42	USE
	REVISION DESCRIPTION	REV. BY
		CHK.



SHEET 57

NOTE  
 PORTIONS OF THIS TAX MAP MAY HAVE BEEN PREPARED FROM  
 SCANNED OR DIGITIZED FILED MAPS AND/OR TAX MAPS.  
 ALL PORTIONS OF THIS TAX MAP HAVE BEEN PREPARED  
 ELECTRONICALLY IN AUTOCAD MAP 2000.

SHEET 34

TAX MAP  
 WOODBRIDGE TOWNSHIP  
 MIDDLESEX COUNTY, NEW JERSEY  
 SCALE : 1"= 100' DATE : JUNE 2008  
 MICHAEL J. McGURL, P.L.S.  
 CME ASSOCIATES  
 3141 BORDENTOWN AVENUE, PARLIN  
 NEW JERSEY, 08859