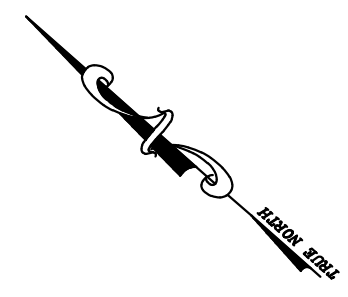
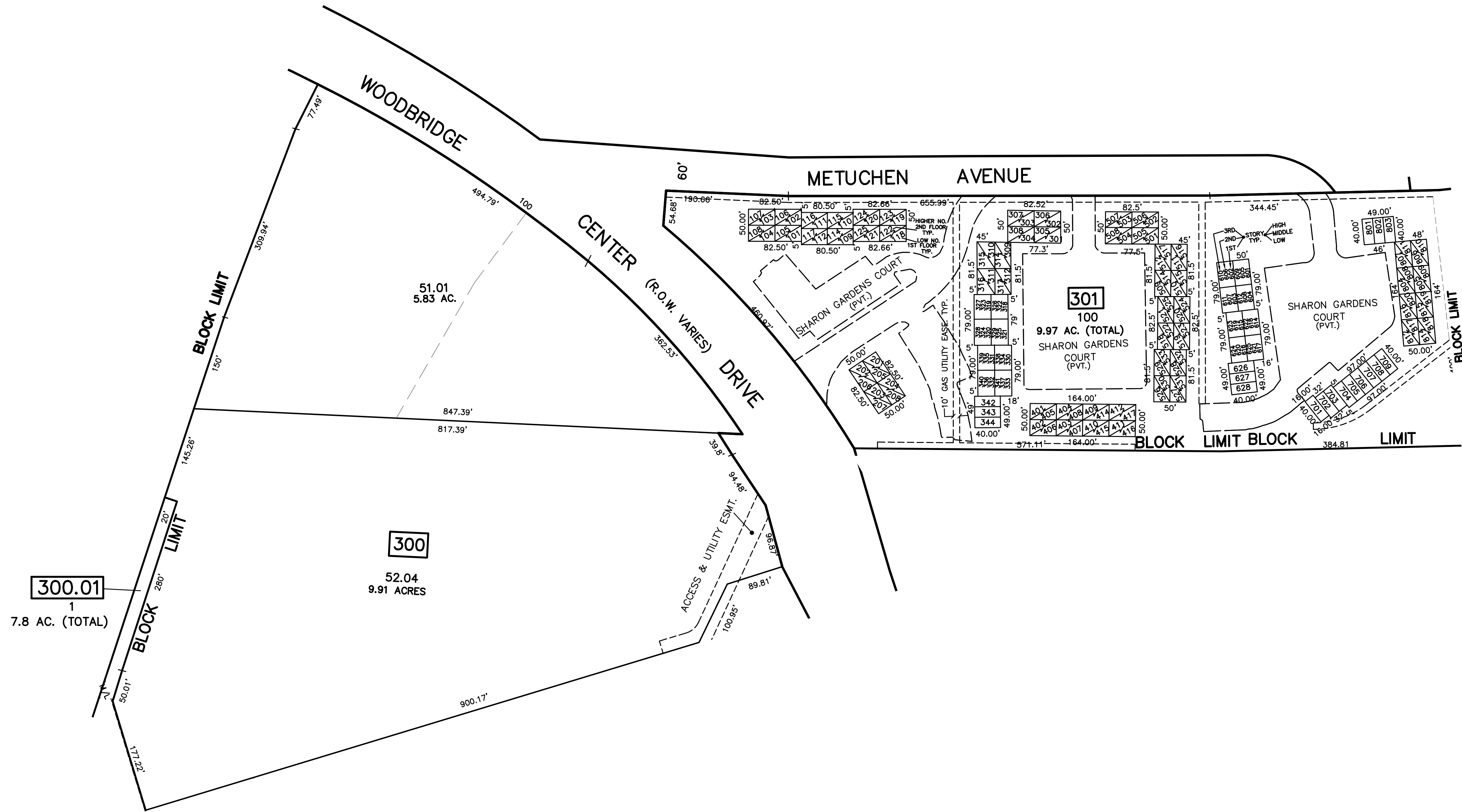


12/31/17	Tax Map Revisions	SR
12/31/13	Tax Map Revisions	SR
12/31/12	Tax Map Revisions	SR
REVISED	DESCRIPTION	REV. BY
		CHK.



SHEET 53

SHEET 41



SHEET 41

SHEET 40

NOTE

PORTIONS OF THIS TAX MAP MAY HAVE BEEN PREPARED FROM  
 SCANNED OR DIGITIZED FILED MAPS AND/OR TAX MAPS.  
 ALL PORTIONS OF THIS TAX MAP HAVE BEEN PREPARED  
 ELECTRONICALLY IN AUTOCAD MAP 2000.

**TAX MAP**  
**WOODBRIDGE TOWNSHIP**  
 MIDDLESEX COUNTY, NEW JERSEY  
 SCALE : 1" = 100' DATE : JUNE 2008  
**MICHAEL J. MCGURL, P.L.S.**  
 CME ASSOCIATES  
 3141 BORDENTOWN AVENUE, PARLIN  
 NEW JERSEY, 08859