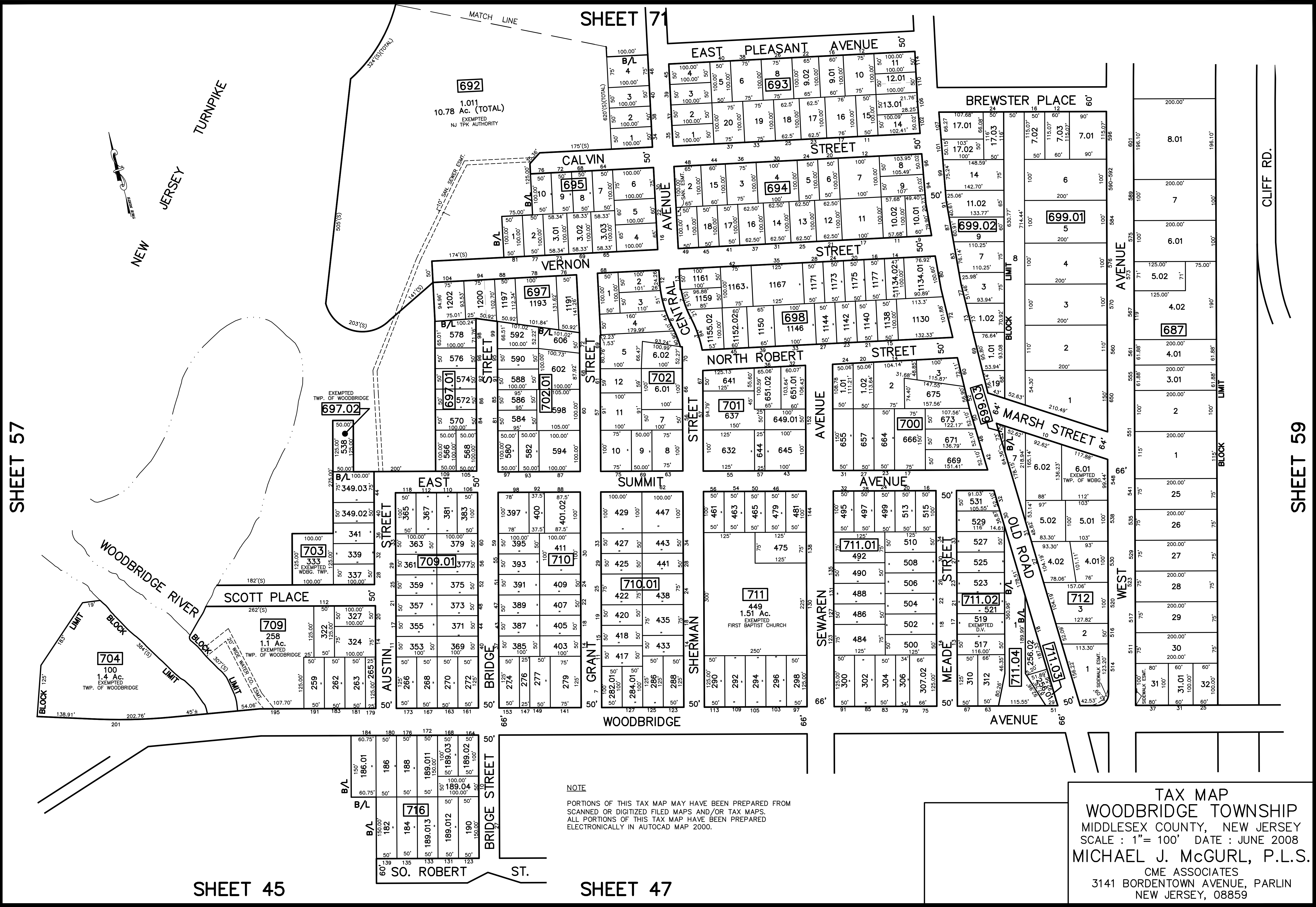


12/31/21	Top Map Revisions	SB
12/31/21	Top Map Revisions	SB
11/02/11	Essements-Bk. 712 L 1 & Bk. 687 L 31	SB
09/27/10	Subdivision-Bk. 702, lots 11 and 12	USE
09/27/10	Subdivision-Bk. 702.01, lot 594, 596, 598	USE
	REVISED DESCRIPTION	REV. BY: CHK.



SHEET 57

SHEET 59

SHEET 45

SHEET 47

NOTE  
 PORTIONS OF THIS TAX MAP MAY HAVE BEEN PREPARED FROM  
 SCANNED OR DIGITIZED FILED MAPS AND/OR TAX MAPS.  
 ALL PORTIONS OF THIS TAX MAP HAVE BEEN PREPARED  
 ELECTRONICALLY IN AUTOCAD MAP 2000.

TAX MAP  
 WOODBRIDGE TOWNSHIP  
 MIDDLESEX COUNTY, NEW JERSEY  
 SCALE : 1"= 100' DATE : JUNE 2008  
 MICHAEL J. McGURL, P.L.S.  
 CME ASSOCIATES  
 3141 BORDENTOWN AVENUE, PARLIN  
 NEW JERSEY, 08859