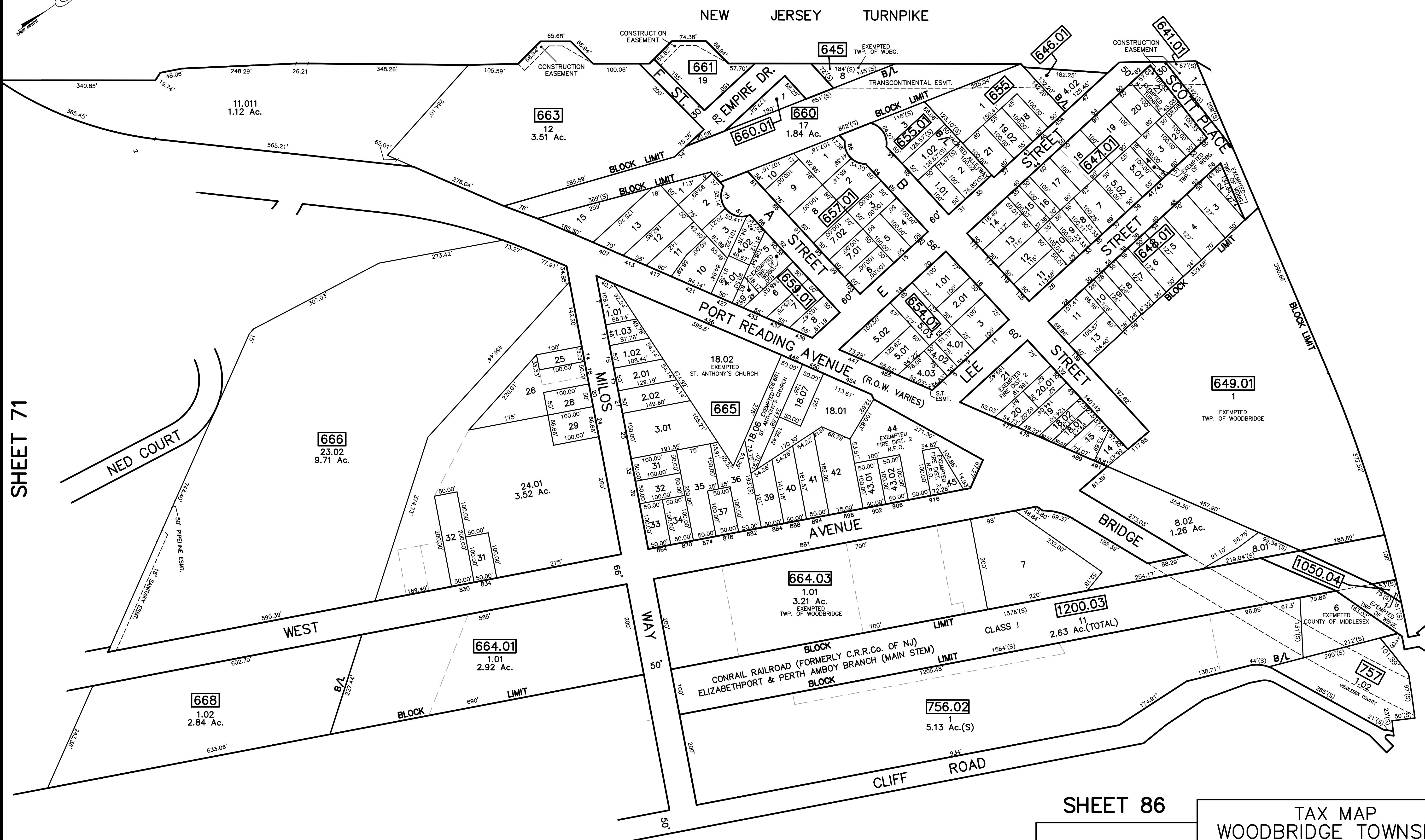
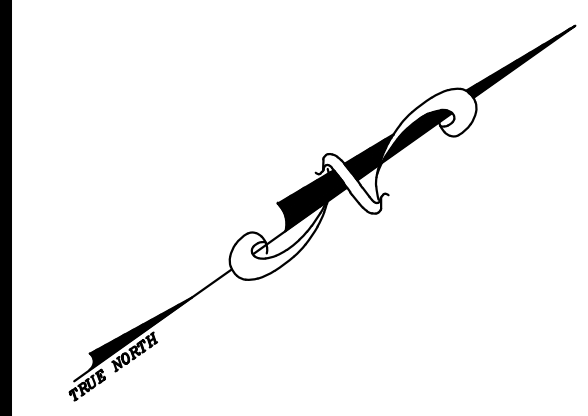


SHEET 84

12/31/24	Top Map Revisions	SB
12/31/20	Top Map Revisions	SB
12/31/19	Top Map Revisions	SB
12/31/14	Top Map Revisions	SB
12/31/13	Top Map Revisions	SB
12/31/12	Top Map Revisions	SB
06/06/11	Block 654.01 Lot 4-Subdivision and Emt.	SB
10/13/10	R.O.W. Avallion-Bk 757, lot 1.02	JSE
09/03/10	Corrections-Bk 665, lot 18.01	JSE
REVISED	DESCRIPTION	
	REV. BY	CHK.



SHEET 71

SHEET 100

SHEET 72

SHEET 86

NOTE  
 PORTIONS OF THIS TAX MAP MAY HAVE BEEN PREPARED FROM  
 SCANNED OR DIGITIZED FILED MAPS AND/OR TAX MAPS.  
 ALL PORTIONS OF THIS TAX MAP HAVE BEEN PREPARED  
 ELECTRONICALLY IN AUTOCAD MAP 2000.

TAX MAP  
 WOODBRIDGE TOWNSHIP  
 MIDDLESEX COUNTY, NEW JERSEY  
 SCALE : 1"= 100' DATE : JUNE 2008  
 MICHAEL J. McGURL, P.L.S.  
 CME ASSOCIATES  
 3141 BORDENTOWN AVENUE, PARLIN  
 NEW JERSEY, 08859